




APP CRS 289°	Rwy Ldg TDZE Apt Elev	N/A N/A 149
------------------------	-----------------------------	--

RNAV (GPS)-A
KING COVE (KVC)(PAVC)

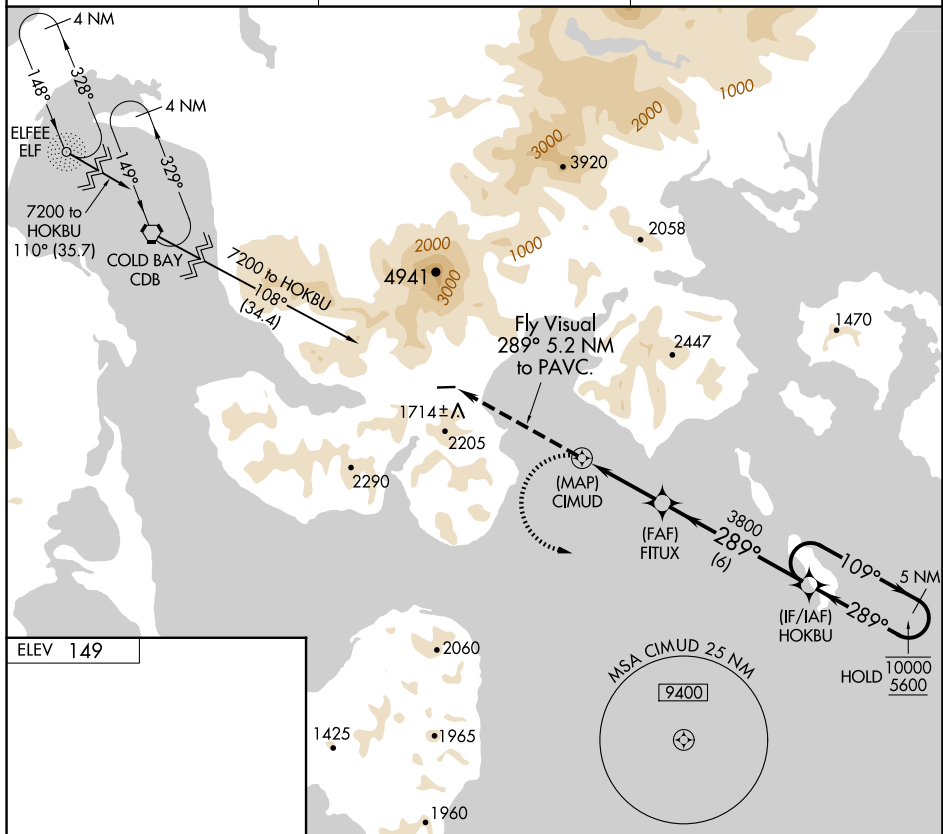
RNP APCH.

 Procedure NA at night.
 Circling NA north Rwy 8 and 26.
 -8°C

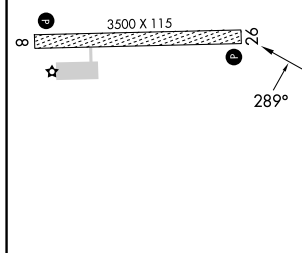
MISSED APPROACH: Climbing left turn to 5600 direct HOKBU and hold.

AWOS-3P
118.325

ANCHORAGE CENTER
118.5 278.3

CTAF
122.9 L

ELEV 149



REIL Rwy 8 and 26 L

MIRL Rwy 8-26 **L**

CATEGORY	A	B	C	D
C CIRCLING	2080-6 1931 (2000-6)	2520-6 2371 (2400-6)	NA	

KING COVE, ALASKA

Orig-C 31 DEC20

55°07'N-162°16'W

KING COVE (KVC)(PAVC)

RNAV (GPS)-A