

APP CRS
250°

Rwy Ldg
TDZE
Apt Elev

5011
520
522

RNAV (GPS) RWY 26
BORREGO VALLEY (L08)

RNP APCH-GPS

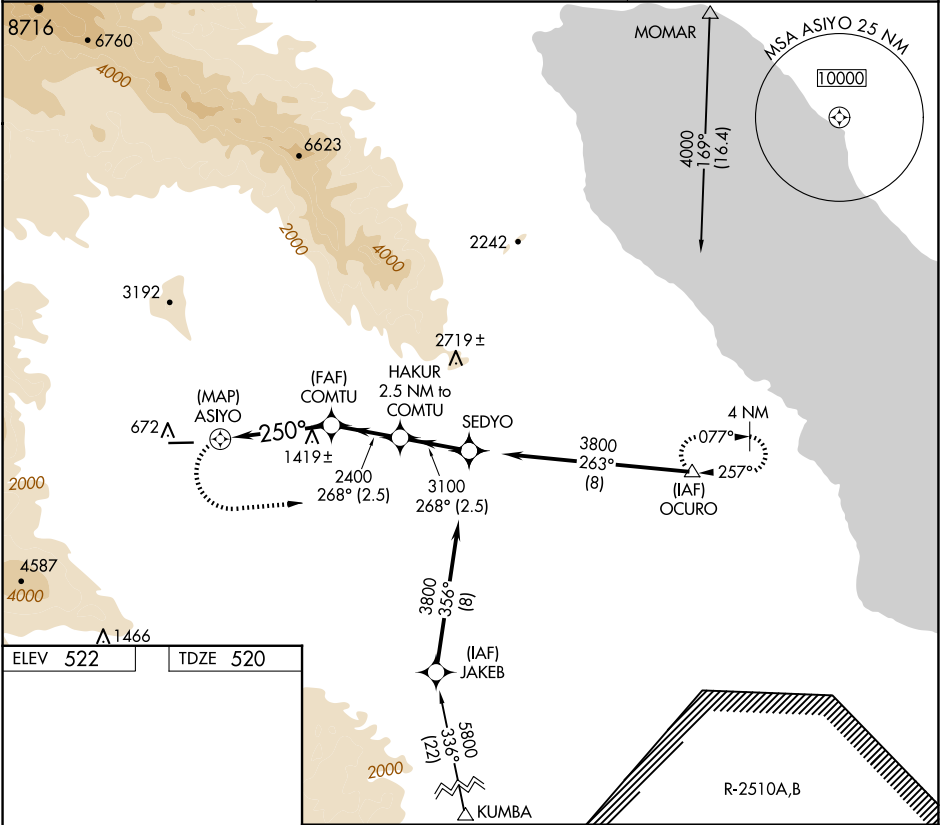
▼

▲

If local altimeter setting not received, use Imperial County altimeter setting and increase all MDAs 580 feet. Circling not authorized south of Rwy 8-26.

MISSED APPROACH: Climbing left turn to 4000 direct OCURO WP and hold.

AWOS-3P 126.575	LOS ANGELES CENTER 128.6 291.7	UNICOM 122.8 (CTAF) 0
--------------------	-----------------------------------	--------------------------



ELEV 522

TDZE 520

5011 X.75

250°

26°

OCURO

VGSI and descent angles not coincident (VGSI Angle 3.00/TCH 28). * VDP not authorized with Imperial County altimeter setting.

ASIYO

COMTU

HAKUR

SEDYO

3.6 NM to RWY 26

3.46° TCH 42

250°

268°

3800

3100

2400

1 NM

2.6 NM

1.4 NM

2.5 NM

2.5 NM

Procedure Turn NA

CATEGORY	A	B	C	D
LNAV MDA	1720-1¼ 1200 (1200-1¼)	1720-1½ 1200 (1200-1½)	1720-3 1200 (1200-3)	
CIRCLING	1720-1¼ 1198 (1200-1¼)	1720-1½ 1198 (1200-1½)	1840-3 1318 (1400-3)	NA