

PRESTON, MINNESOTA

AL-9286 (FAA)

23110

WAAS CH 70529 W29A	APP CRS 286°	Rwy Idg TDZE Apt Elev	4001 1277 1277
--	------------------------	-----------------------------	---

APP CRS
286°

Rwy Idg	4001
TDZE	1277
Apt Elev	1277

RNAV (GPS) RWY 29
FILLMORE COUNTY (FKA)

FILLMORE COUNTY (FKA)

RNP APCH-GPS.



Rwy 29 helicopter visibility reduction below $\frac{3}{4}$ SM NA.



For uncompensated Baro-VNAV systems, LNAV/VNAV NA below -17°C or above 54°C.

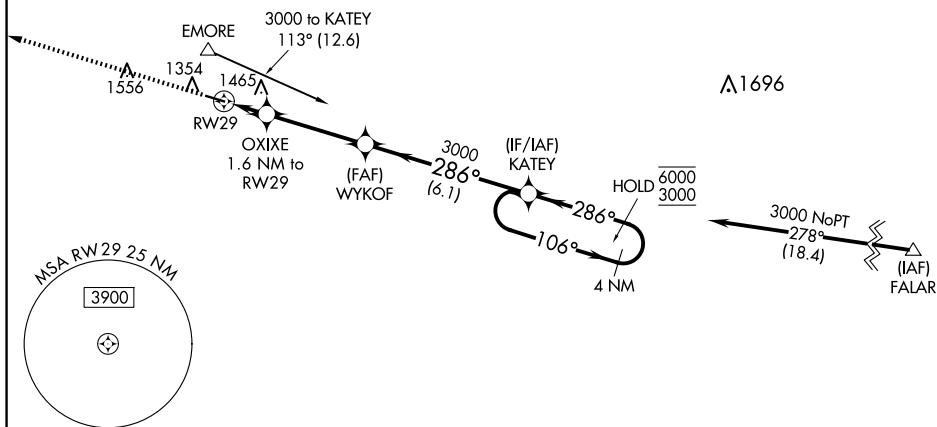
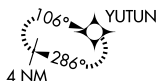
MISSED APPROACH: Climb to 4000 direct YUTUN and hold.

AWOS-3PT 118.55	ROCHESTER APP CON * 119.8 251.125	CTAF 122.90
---------------------------	---	-----------------------

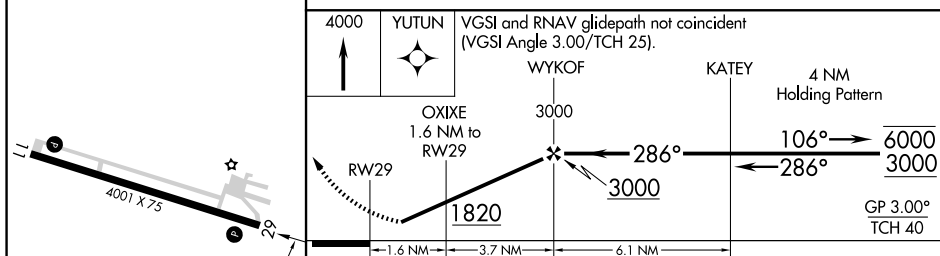
ROCHESTER APP CON★
119.8 251-125


CTAF
122.9 **L**

MISSED APCH FIX



ELEV 1277		TDZE 1277
-----------	--	-----------



CATEGORY	A	B	C	D
LPV DA	1527-1 250 (300-1)			NA
RNAV/ VNAV DA	1550-1 273 (300-1)			NA
RNAV MDA	1780-1	503 (600-1)	1780-1 ³ / ₈ 503 (600-1 ³ / ₈)	NA
 CIRCLING	1780-1 503 (600-1)	1900-1 623 (700-1)	1900-1 ³ / ₄ 623 (700-1 ³ / ₄)	NA

REIL Rwy 11 and 29 L

MIRL Rwy 11-29 **L**

PRESTON, MINNESOTA

Amdt 1E 17JUN21

43°41'N-92°11'W

FILLMORE COUNTY (FKA)

RNAV (GPS) RWY 29

NC-1, 10 JUL 2025 to 07 AUG 2025