

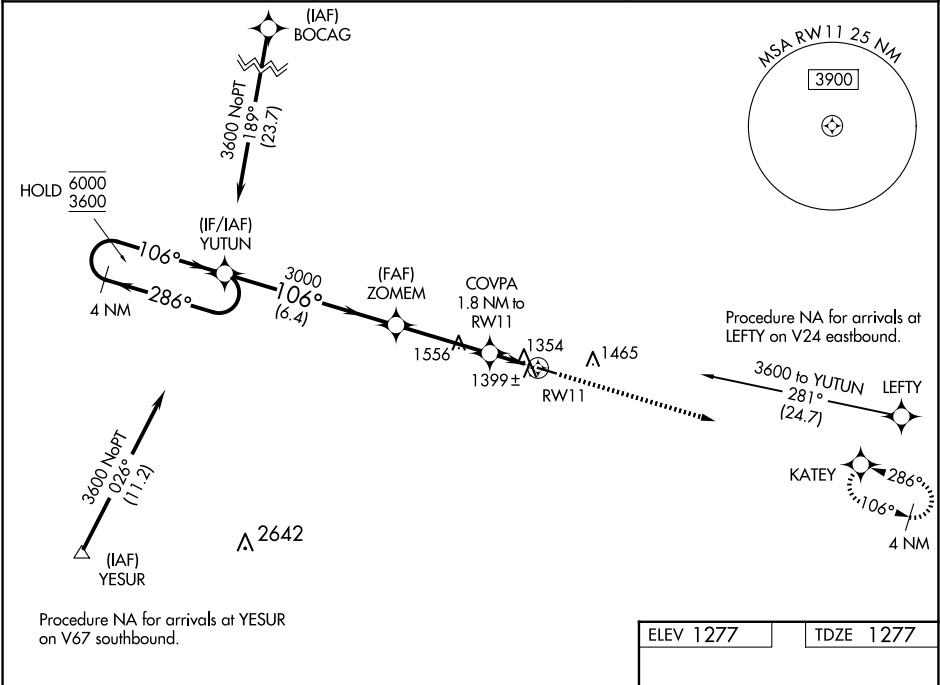
WAAS CH <b>65829</b> <b>W11A</b>	APP CRS <b>106°</b>	Rwy Idg TDZE <b>1277</b> Apt Elev <b>1277</b>
--	------------------------	---

RNAV (GPS) RWY 11

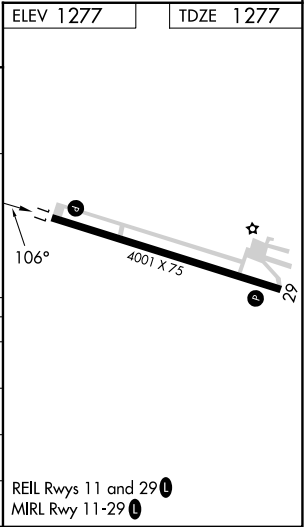
FILLMORE COUNTY (FKA)

RNP APCH.		MISSED APPROACH: Climb to 3200 direct KATEY and hold.
<div><div>T</div>Rwy 11 helicopter visibility reduction below ¾ SM NA.</div> <div><div>A</div>For uncompensated Baro-VNAV systems, LNAV/VNAV NA below -17°C or above 54°C.</div>		

AWOS-3PT <b>118.55</b>	ROCHESTER APP CON ★ <b>119.8 251.125</b>	CTAF <b>122.9 0</b>
---------------------------	---	------------------------



4 NM Holding Pattern		VGSI and RNAV glidepath not coincident (VGSI Angle 3.00/TCH 26).		3200 KATEY
6000 ← 286° 3600 → 106°		YUTUN	ZOMEM	*INAV only
GP 3.00° TCH 40		3000	3000	
		6.4 NM	3.5 NM	*1.1 NM to RW11
				RW11
				0.7
				1.1 NM
CATEGORY	A	B	C	D
LPV DA	1527-1	250 (300-1)		NA
LNAV/VNAV DA	1573-1	296 (300-1)		NA
LNAV MDA	1660-1	383 (400-1)	1660-1 3/8 383 (400-1 3/8)	NA
CIRCLING	1700-1 423 (500-1)	1900-1 623 (700-1)	1900-1 3/4 623 (700-1 3/4)	NA



NC-1, 10 JUL 2025 to 07 AUG 2025

NC-1, 10 JUL 2025 to 07 AUG 2025