

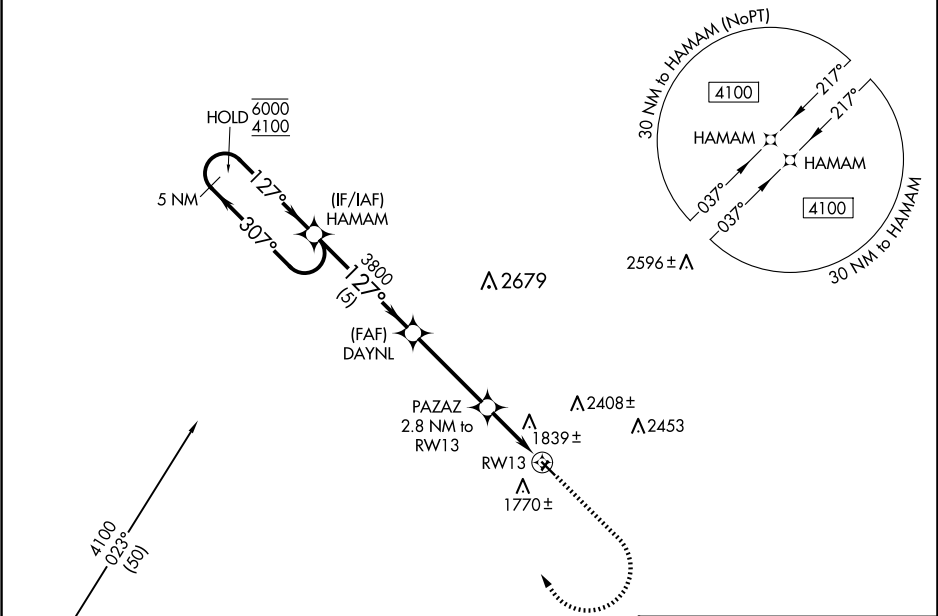
|  |                        |                             |   |
|--|------------------------|-----------------------------|---|
| WAAS<br>CH <b>42545</b><br><b>W13A</b> | APP CRS<br><b>127°</b> | Rwy Idg<br>TDZE<br>Apt Elev | <b>3700</b><br><b>1679</b><br><b>1680</b> |
|--|------------------------|-----------------------------|---|

RNAV (GPS) RWY 13

BOTTINEAU MUNI (D09)

|  |  |
|--|--|
| RNP APCH - GPS.  | MISSED APPROACH: Climb to 3000 then climbing right turn to 4100 direct HAMAM and hold. |
| <div><div></div><div>Circling NA to Rwys 3 and 21. Rwy 13 helicopter visibility reduction below ¾ SM NA.</div></div> |  |

|                           |                                       |                                 |
|---------------------------|---------------------------------------|---------------------------------|
| AWOS-3PT<br><b>118.25</b> | MINOT APP CON ★<br><b>119.6 363.8</b> | UNICOM<br><b>122.8 (CTAF) 0</b> |
|---------------------------|---------------------------------------|---------------------------------|



Procedure NA for arrivals at MOT VOR/DME  
on V430 westbound.

VGSI and RNAV glidepath not coincident  
[VGSI Angle 3.00/TCH 30].

3000

4100

HAMAM

5 NM  
Holding Pattern

HAMAM

DAYNL

PAZAZ

2.8 NM to  
RW13

1.2 NM to  
RW13

RW13

6000 ← 307°  
4100 ← 127°

3800

2600

GP 3.00°  
TCH 40

5 NM

3.8 NM

1.6 NM

1.2 NM

CATEGORY

A

B

C

D

LPV DA

1929-1

250 (300-1)

NA

LNNAV MDA

2100-1

421 (500-1)

NA

CIRCLING

2200-1  
520 (600-1)

2380-1  
700 (700-1)

NA

ELEV 1680

TDZE 1679

MIRL Rwy 13-31