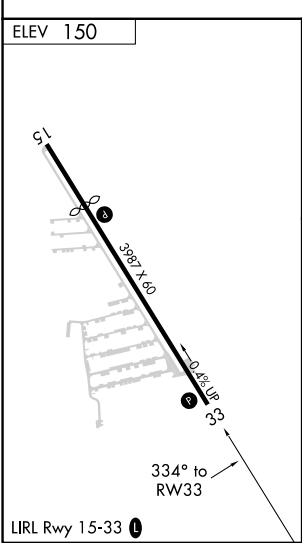
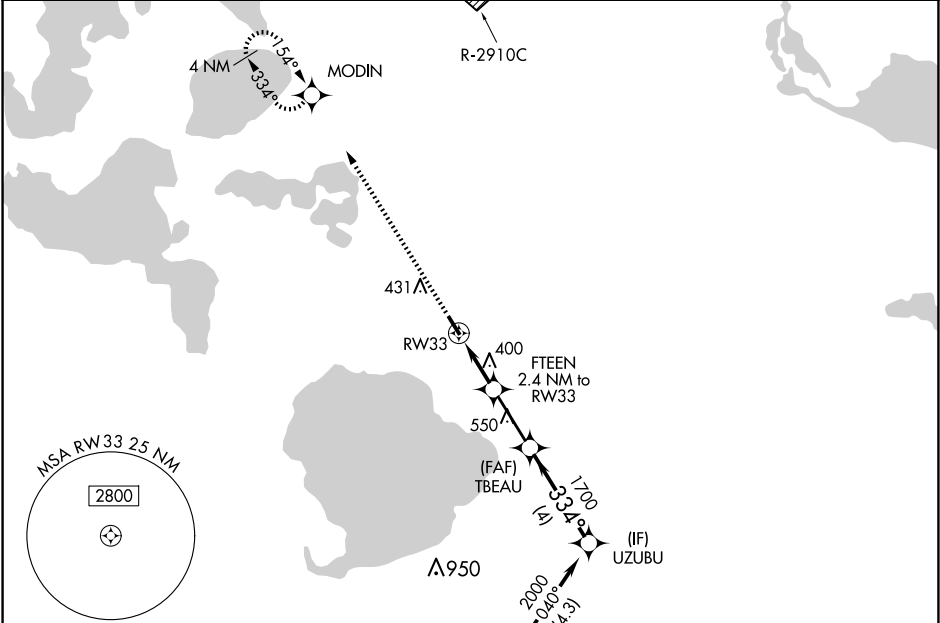


APP CRS	Rwy Idg	N/A
334°	TDZE	N/A
	Apt Elev	150

RNAV (GPS)-B  
ORLANDO APOPKA (X04)

NA	DME/DME RNP-0.3 NA. Procedure NA at night. Visibility reduction by helicopters NA. Use Leesburg Intl altimeter setting; when not received, use Executive altimeter setting.	MISSED APPROACH: Climb to 2000 direct MODIN and hold.
----	---	---

LEE ASOS 134.325	ORLANDO APP CON 135.3 351.9	UNICOM 123.05 (CTAF) 0
---------------------	--------------------------------	---------------------------



2000	MODIN	VGSI and descent angles not coincident (VGSI Angle 3.00/TCH 25).		UZUBU
		TBEAU		2000
		FTEEN 2.4 NM to RW33		1700
		RW33		920
		3.00° TCH 35		
		2.4 NM		4 NM
CATEGORY	A	B	C	D
CIRCLING	700-1 550 (600-1)	840-1 690 (700-1)	NA	

SE-3, 10 JUL 2025 to 07 AUG 2025

SE-3, 10 JUL 2025 to 07 AUG 2025