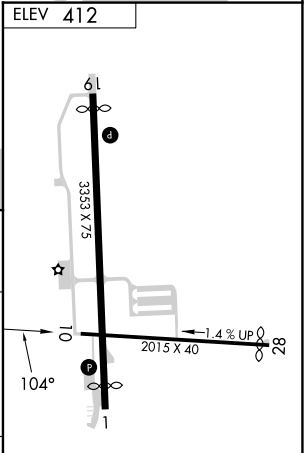
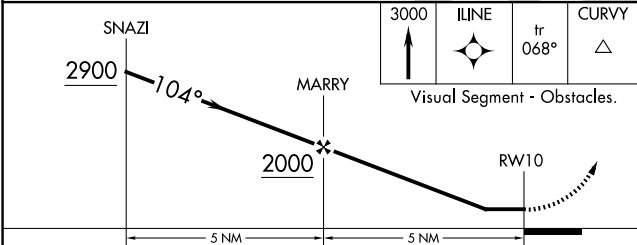
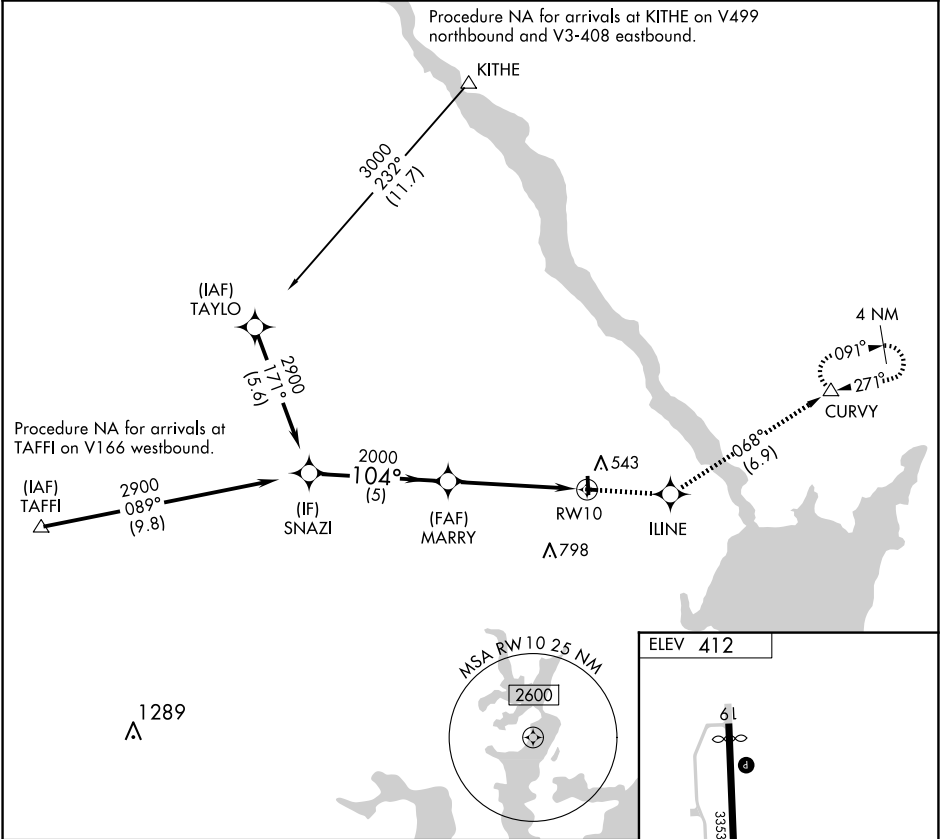


APP CRS	Rwy Idg	N/A
104°	TDZE	N/A
	Apt Elev	412

RNAV (GPS)-B  
HARFORD COUNTY (ØW3)

RNP APCH - GPS.	MISSED APPROACH: Climb to 3000 direct ILINE and on track 068° to CURVY and hold, continue climb-in-hold to 3000.
▼ ▲ Rwy 1, 19, 10 and 28 helicopter visibility reduction below 1 SM NA. When local altimeter setting not received, use Aberdeen Proving Grounds (Aberdeen) altimeter setting and increase all MDAs 80 feet. Procedure NA at night.	

AWOS-3PT 132.725	KAPG ATIS ★ 124.425	POTOMAC APP CON 125.525 291.625	UNICOM 122.8 (CTAF) 0
---------------------	------------------------	------------------------------------	--------------------------



CATEGORY	A	B	C	D
CIRCLING	960-1 548 (600-1)	NA		

MIRL Rwy 1-19 0  
REIL Rws 1 and 19 0  
REIL Rws 10 and 28

NE-3, 10 JUL 2025 to 07 AUG 2025

NE-3, 10 JUL 2025 to 07 AUG 2025