

WAAS CH <b>56246</b> <b>W16A</b>	APP CRS <b>159°</b>	Rwy Idg TDZE <b>1287</b> Apt Elev <b>1288</b>	<b>8800</b>
----------------------------------------	------------------------	-----------------------------------------------------	-------------

RNAV (GPS) RWY 16L

NORTHWEST ARKANSAS NTL (XNA)

RNP APCH - GPS.

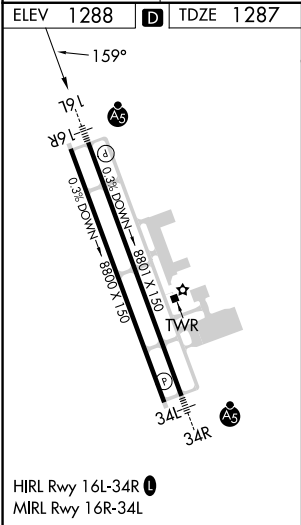
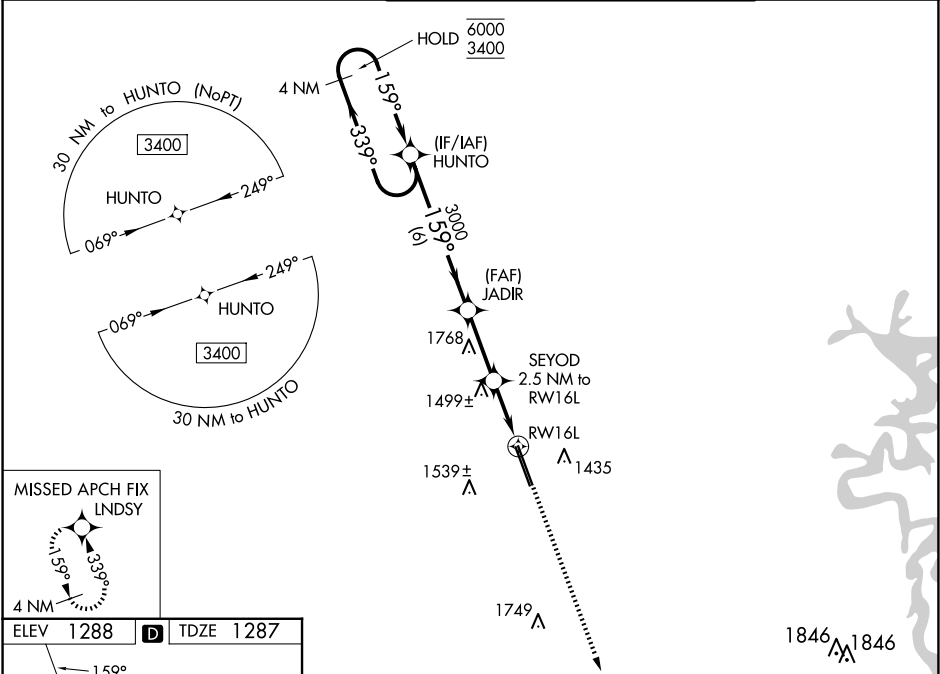
▼  
▲

For uncompensated Baro-VNAV systems, LNAV/VNAV NA below -15°C or above 54°C. For inop ALS, increase LPV Cat E visibility to RVR 4000, LNAV/VNAV Cat E visibility to 1¼ SM and LNAV Cats C, D, and E visibility to 1½ SM. \*RVR 1800 authorized with use of FD or AP or HUD to DA.

MALSR

MISSED APPROACH:  
Climb to 3400 direct  
LNDY and hold.

ATIS <b>119.425</b>	RAZORBACK APP CON ★ <b>121.0 244.575</b>	NORTHWEST ARKANSAS NTL TOWER ★ <b>127.1</b> (CTAF) <b>0</b>	GND CON <b>121.9</b>
------------------------	---------------------------------------------	----------------------------------------------------------------	-------------------------



4 NM Holding Pattern		VGSI and RNAV glidepath not coincident (VGSI Angle 3.00/TCH 52).		3400	LNDY
HUNTO		JADIR	SEYOD	2.5 NM to RWY 16L	
6000 3400		3000	2140	1.3 NM to RWY 16L	
GP 3.00° TCH 57		3000	2140	1.3 NM to RWY 16L	
6 NM		2.7 NM	1.2	1.3	
CATEGORY	A	B	C	D	E
LPV DA*	1487/24		200 (200-½)		
LNAV/VNAV DA	1710/40		423 (500-¾)		
LNAV MDA	1760/24	473 (500-½)		1760/50 473 (500-1)	
CIRCLING	1760-1	472 (500-1)		2040-2¼ 752 (800-2¼)	2080-2½ 792 (800-2½) 2080-2¾ 792 (800-2¾)