

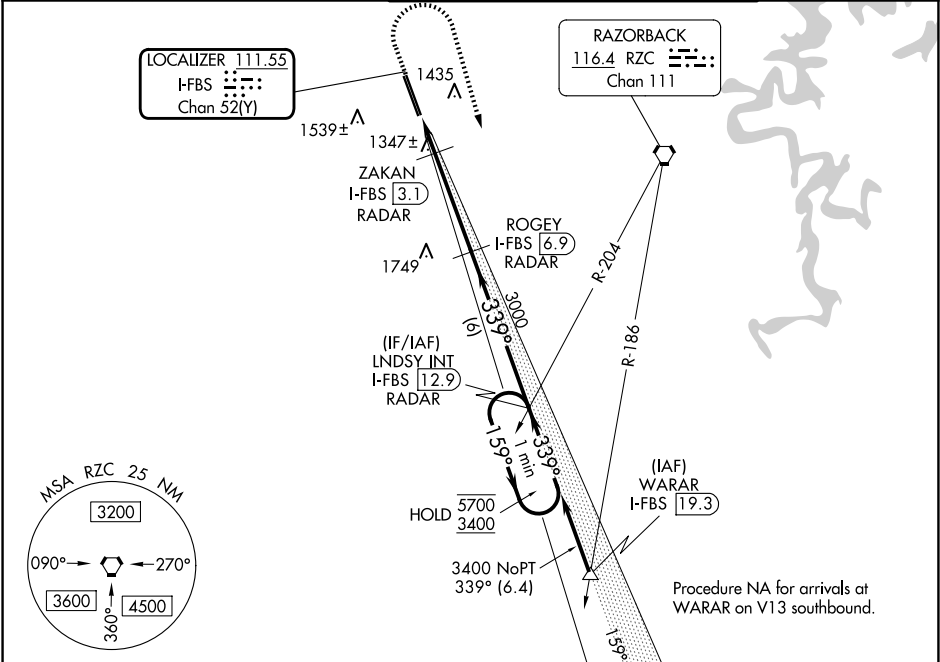
LOC/DME I-FBS	APP CRS	Rwy Ldg	8800
111.55	339°	TDZE	1273
Chan 52(Y)		Apt Elev	1288

ILS or LOC RWY 34R

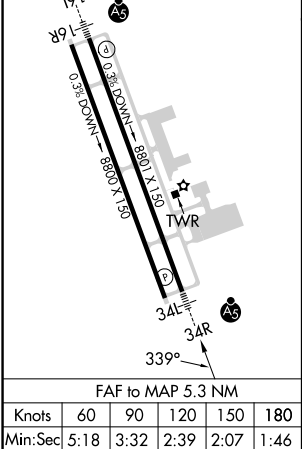
NORTHWEST ARKANSAS NTL (XNA)

DME or RADAR required for LOC only.	MALSR	MISSED APPROACH: Climb to 1800 then climbing right turn to 3400 on heading 163° and RZC VORTAC R-204 to LND SY INT/I-FBS 12.9 DME/RADAR and hold.
For inop ALS, increase S-ILS 34R Cat E visibility to RVR 4000 and S-LOC 34R Cats C/D/E visibility to RVR 5500. *RVR 1800 authorized with use of FD or AP or HUD to DA.		

ATIS	RAZORBACK APP CON*	NORTHWEST ARKANSAS NTL TOWER *	GND CON
119.425	121.0 244.575	127.1 (CTAF) 0	121.9



ELEV 1288	D	TDZE 1273
HIRL Rwy 16L-34R 0		
MIRL Rwy 16R-34L		



1800	3400	RZC R-204	LND SY INT	VGSI and ILS glidepath not coincident (VGSI Angle 3.00/TCH 51).
↑	hdg 163°			
		ROGEY I-FBS 6.9 RADAR	LND SY INT I-FBS 12.9 RADAR	One Minute Holding Pattern
		ZAKAN I-FBS 3.1 RADAR		
		I-FBS 2.5		
		I-FBS 1.6		
		1800	3000	
		0.9	0.6	3.8 NM
				6 NM
CATEGORY	A	B	C	D
S-ILS 34R*	1473/24 200 (200-1/2)			
S-LOC 34R	1620/24	347 (400-1/2)	1620/30	347 (400-3/4)
CIRCLING	1740-1 452 (500-1)	1760-1 472 (500-1)	2040-2 1/4 752 (800-2 1/4)	2080-2 1/2 792 (800-2 1/2)
			2080-2 3/4 792 (800-2 3/4)	