

LOC/DME I-XNA

111.55

APP CRS

159°

Rwy ldg

8800

TDZE

1287

Chan

52 (Y)

Apt Elev

1288

ILS or LOC RWY 16L

NORTHWEST ARKANSAS NTL (XNA)

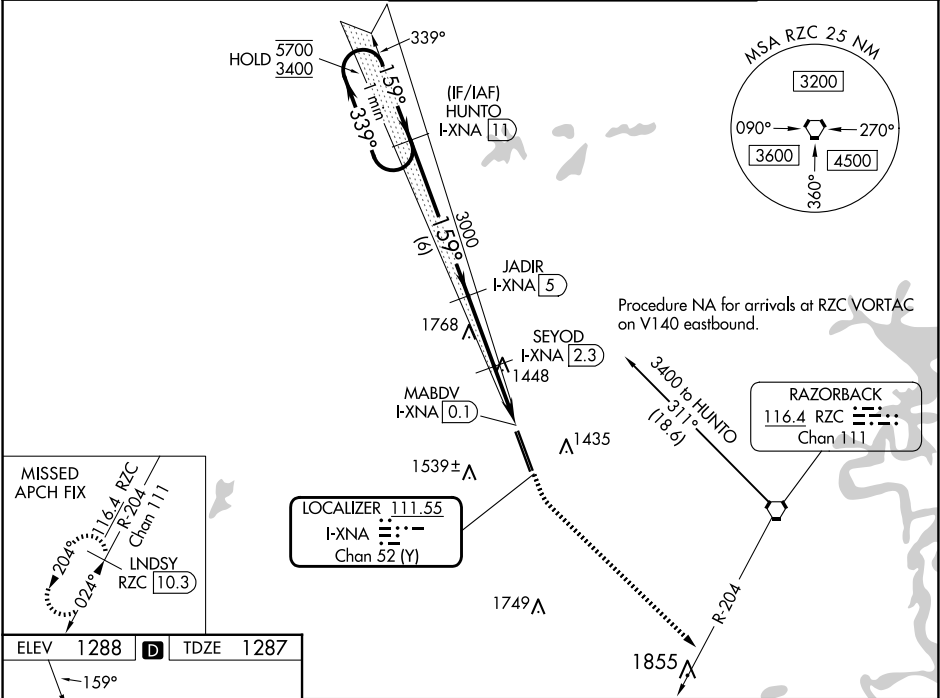
DME required.

For inop ALS, increase S-ILS 16L Cat E visibility to RVR 4000 and S-LOC 16L Cats C, D, and E visibility to RVR 6000.
* RVR 1800 authorized with use of FD or AP or HUD to DA.

MALSR

MISSED APPROACH: Climb to 1800 then climbing left turn to 3400 on heading 133° and RZC VORTAC R-204 to LNSDY/RZC 10.3 DME and hold.

ATIS 119.425	RAZORBACK APP CON ★ 121.0 244.575	NORTHWEST ARKANSAS NTL TOWER ★ 127.1 (CTAF) 0	GND CON 121.9
------------------------	---	---	-------------------------



VGSI and ILS glidepath not coincident (VGSI Angle 3.00/TCH 52).

One Minute Holding Pattern

HUNTO I-XNA 11

JADIR I-XNA 5

SEYOD I-XNA 2.3

I-XNA 1

I-XNA DME ANTENNA

MABDV I-XNA 0.1

3000, 2140, 3000, 2140

6 NM, 2.7 NM, 1.4 NM, 0.9, 0.2

1800, 3400, hdg 133°, RZC R-204, LNSDY RZC 10.3

5700, 3400, 339°, 159°, 159°

GS 3.00° TCH 57

CATEGORY	A	B	C	D	E
S-ILS 16L*	1487/24 200 (200-½)				
S-LOC 16L	1700/24 413 (500-½)		1700/40 413 (500-¾)		
CIRCLING	1740-1 452 (500-1)	1760-1 472 (500-1)	2040-2¼ 752 (800-2¼)	2080-2½ 792 (800-2½)	2080-2¾ 792 (800-2¾)

FAYETTEVILLE/SPRINGDALE/ROGERS, ARKANSAS

Orig 20APR23

36°17'N-94°18'W

NORTHWEST ARKANSAS NTL (XNA)

ILS or LOC RWY 16L