

HUSLIA, ALASKA

AL-9273 (FAA)

19283

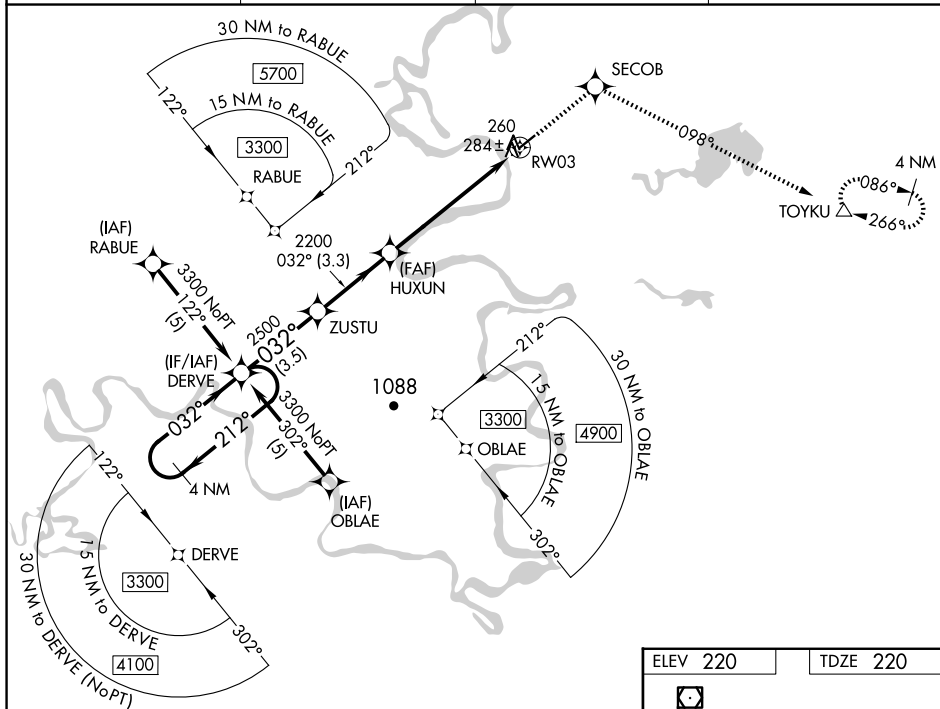
WAAS CH <b>42608</b> <b>W03A</b>	APP CRS <b>032°</b>	Rwy Idg <b>4000</b> TDZE <b>220</b> Apt Elev <b>220</b>
--	------------------------	---

RNAV (GPS) RWY 3  
HUSIA(HLA)(PAHL)

**T** For uncompensated Baro-VNAV systems, LNAV/VNAV NA below -25°C (-13°F) or above 48°C (118°F). Helicopter visibility reduction below  $\frac{3}{4}$  SM NA. DME/DME RNP-0.3 NA.

**MISSED APPROACH:** Climb to 3500 direct SECOB and via 098° track to TOYKU and hold, continue climb-in-hold to 3500.

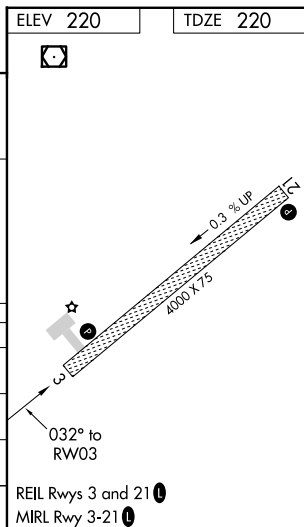
AWOS-3P <b>135.75</b>	ANCHORAGE CENTER <b>127.0 290.2</b>	FAIRBANKS RADIO <b>122.4</b>	UNICOM <b>122.8 (CTAF) 0</b>
--------------------------	--	---------------------------------	---------------------------------



AK, 12 JUN 2025 to 07 AUG 2025

AK, 12 JUN 2025 to 07 AUG 2025

VGSi and RNAV glidepath not coincident (VGSi Angle 3.00/TCH 25).		3500 	SECOB 	tr 098° 	TOYKU 
CATEGORY	A	B	C	D	
LPV DA	525-1 305 (400-1)				
LNAV/ VNAV DA	567-1¼ 347 (400-1¼)				
LNAV MDA	540-1 320 (400-1)				
CIRCLING	600-1 380 (400-1)	680-1 460 (500-1)	680-1½ 460 (500-1½)	780-2 560 (600-2)	



HUSLIA, ALASKA  
Amdt 2B 06FEB14

65°42'N-156°21'W

HUSLIA(HLA)(PAHL)  
RNAV (GPS) RWY 3