

WAAS CH 61108 W21A	APP CRS 212°	Rwy Idg TDZE 217 Apt Elev 220
--	------------------------	---

RNAV (GPS) RWY 21

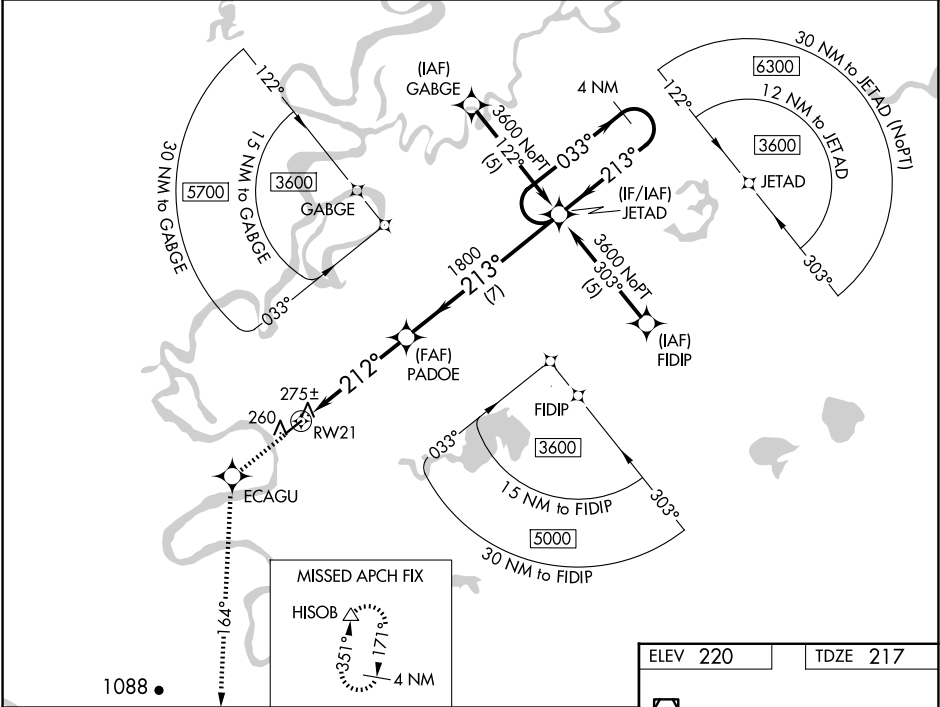
HUSLIA (HLA)(PAHL)

▼

For uncompensated Baro-VNAV systems, LNAV/VNAV NA below -25°C (-13°F) or above 48°C (118°F). Helicopter visibility reduction below ¾ SM NA. DME/DME RNP-0.3 NA.

MISSED APPROACH: Climb to 3000 direct ECAGU and via 164° track to HISOB and hold.

AWOS-3P 135.75	ANCHORAGE CENTER 127.0 290.2	FAIRBANKS RADIO 122.4	UNICOM 122.8 (CTAF) 1
--------------------------	--	---------------------------------	---------------------------------



3000

↑

ECAGU

✱

HISOB

△

VGSI and RNAV glidepath not coincident
(VGSI Angle 3.00/TCH 25).

tr 164°

JETAD

4 NM
Holding Pattern

PADOE

033°

← 213°

3600

RW21

212°

213°

1800

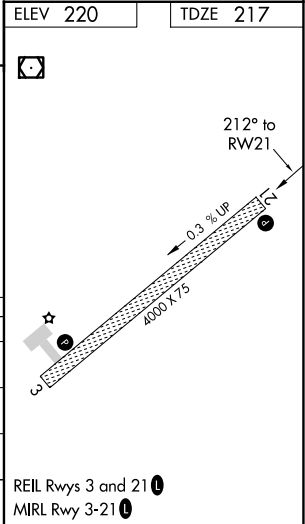
GP 3.00°

TCH 45

4.8 NM

7 NM

CATEGORY	A	B	C	D
LPV DA	517-1 300 (300-1)			
LNAV/VNAV DA	549-1¼ 332 (400-1¼)			
LNAV MDA	540-1 323 (400-1)			
CIRCLING	600-1 380 (400-1)	680-1 460 (500-1)	680-1½ 460 (500-1½)	780-2 560 (600-2)



AK, 12 JUN 2025 to 07 AUG 2025

AK, 12 JUN 2025 to 07 AUG 2025