

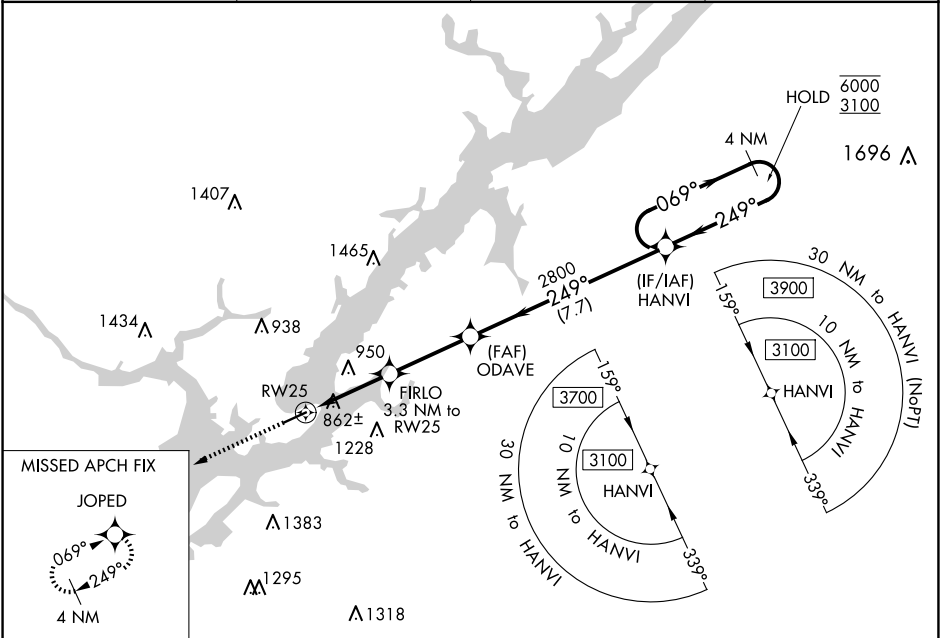
WAAS CH <b>93640</b> <b>W25A</b>	APP CRS <b>249°</b>	Rwy Idg TDZE <b>615</b> Apt Elev <b>615</b>	<b>5005</b>
--	------------------------	---	-------------

RNAV (GPS) RWY 25

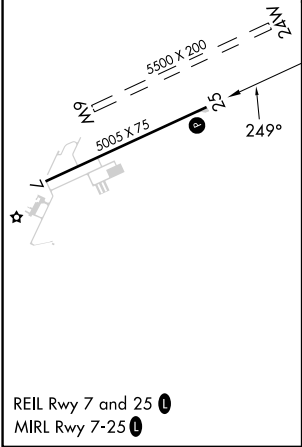
GUNTERSVILLE MUNI/JOE STARNES FLD (8A1)

RNP APCH.	MISSED APPROACH: Climb to 3000 direct JOPED and hold.
NA Circling NA to Rws 6 and 24. Circling Rwy 7 NA at night. Rwy 25 helicopter visibility reduction below ¾ SM NA. Baro-VNAV NA. Use Scottsboro altimeter setting.	

AWOS-3PT <b>121.125</b>	4A6 AWOS-3PT <b>120.125</b>	HUNTSVILLE APP CON ★ <b>125.6 354.1</b>	UNICOM <b>122.8 (CTAF) 0</b>
----------------------------	--------------------------------	--	---------------------------------



ELEV 615	TDZE 615
----------	----------



3000	JOPED	VGSI and RNAV glidepath not coincident (VGSI angle 3.35/TCH 50).		4 NM Holding Pattern
*LNAV only.	FIRLO 3.3 NM to RW25	ODAVE 2800	HANVI	6000 3100 GP 3.10° TCH 50
RW25	1740*	2800	249°	069°
3.3 NM	3.2 NM	7.7 NM		
CATEGORY	A	B	C	D
LPV DA	1026-1⅓ 411 (500-1⅓)			
LNAV/VNAV DA	1224-2 609 (700-2)			
LNAV MDA	1260-1	645 (700-1)	1260-2	645 (700-2)
CIRCLING	1360-1 745 (800-1)	1380-1 765 (800-1)	1620-3 1005 (1100-3)	1840-3 1225 (1300-3)