

WAAS CH <b>45926</b> <b>W03A</b>	APP CRS <b>027°</b>	Rwy Idg TDZE <b>530</b> Apt Elev <b>537</b>
--	------------------------	---

RNAV (GPS) RWY 3

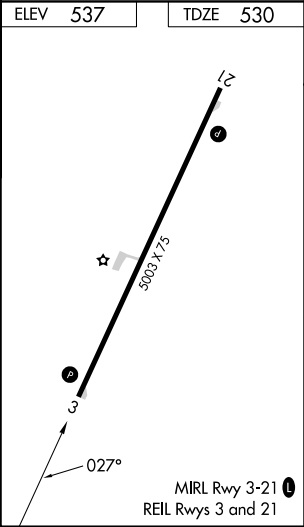
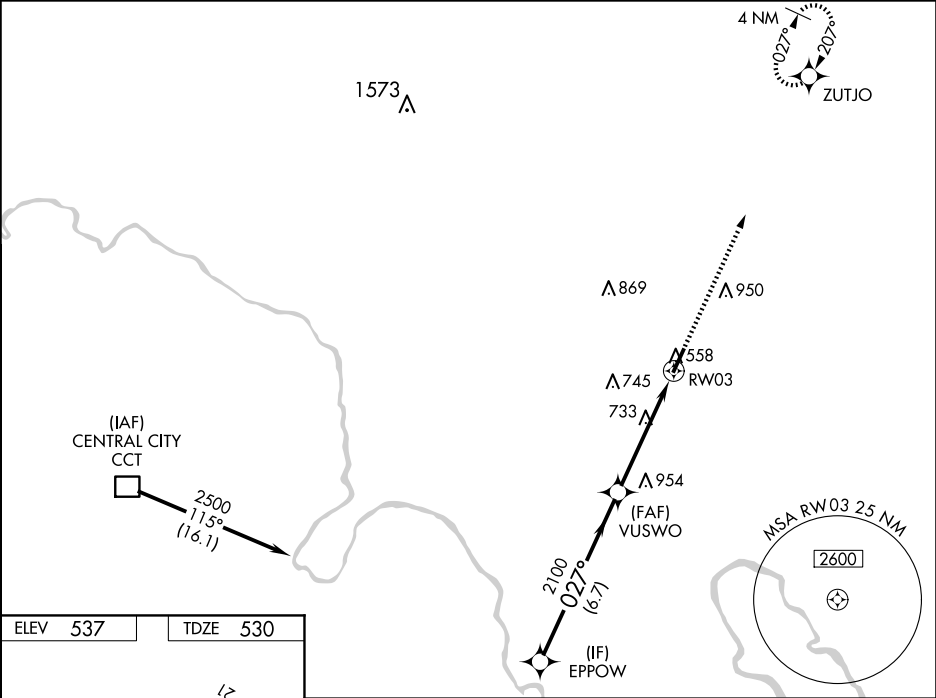
OHIO COUNTY (JQD)

RNP APCH - GPS.

**⚠** Baro-VNAV and VDP NA when using Owensboro altimeter setting. For uncompensated Baro-VNAV systems, LNAV/VNAV NA below -16°C or above 54°C. When local altimeter setting not received, use Owensboro altimeter setting and increase LPV and LNAV/VNAV DA to 851 feet. Increase all MDA 80 feet and LNAV Cat C visibility ¾ SM and Circling Cat C visibility ¼ SM. Circling Rwy 21 NA at night. Rwy 3 helicopter visibility reduction below ¾ SM NA.

**MISSED APPROACH:**  
Climb to 2500 direct ZUTJO and hold.

AWOS-3PT <b>132.1</b>	EVANSVILLE APP CON ★ <b>124.025 290.9</b>	UNICOM <b>122.8 (CTAF) 0</b>
--------------------------	--	---------------------------------



EPPOW		VUSWO		2500	ZUTJO
2500		2100		1.5 NM to RW03	RW03
GP 3.00° TCH 40		2100		1.5 NM	
6.7 NM		3.3 NM		1.5 NM	
CATEGORY	A	B	C	D	
LPV DA	780-1		250 (300-1)	NA	
LNAV/VNAV DA	780-1		250 (300-1)	NA	
LNAV MDA	1040-1	510 (600-1)	1040-1 510 (600-1 3/8)	NA	
<b>C</b> CIRCLING	1040-1 503 (600-1)	1100-1 563 (600-1)	1300-2 763 (800-2 1/4)	NA	

SE-1, 10 JUL 2025 to 07 AUG 2025

SE-1, 10 JUL 2025 to 07 AUG 2025