

WAAS
CH **73010**
W09A

APP CRS
091°

Rwy Ldg
TDZE **3669**
Apt Elev **3703**

RNAV (GPS) Z RWY 9

GRANT COUNTY RGNL/OGILVIE FLD (GCD)

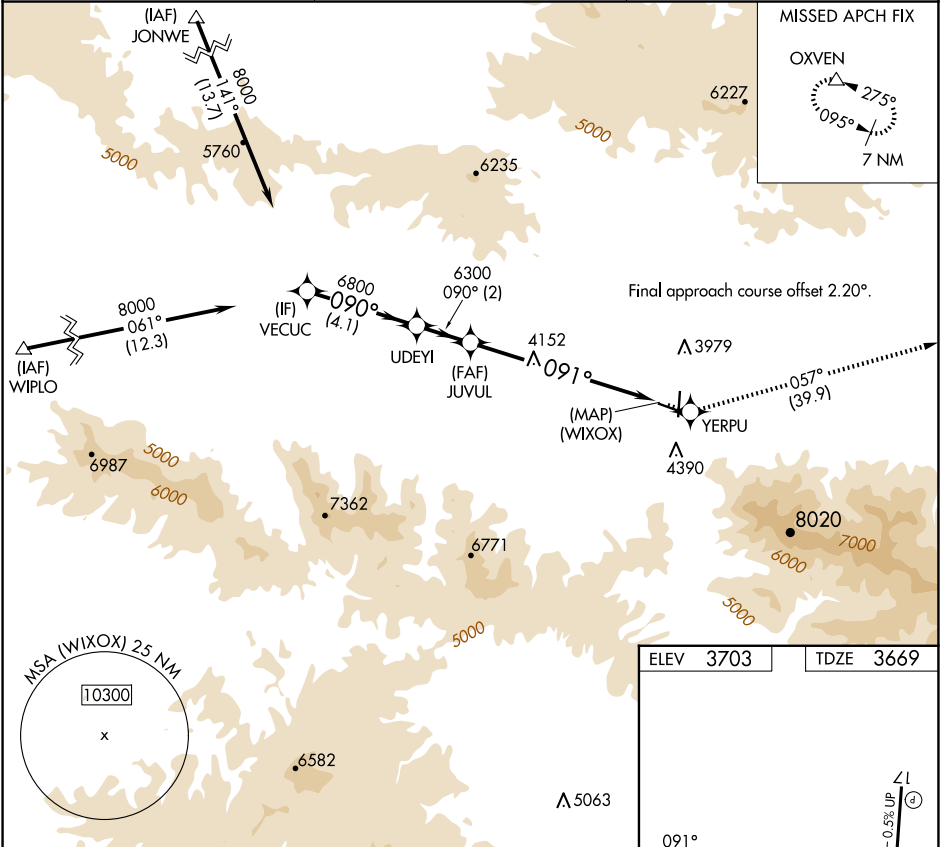
RNP APCH - GPS.
When local altimeter setting not received, procedure NA.
Rwy 9 helicopter visibility reduction below 3/4 SM NA.

MISSED APPROACH: Climb to 12000 direct YERPU and on track 057° to OXVEN and hold, continue climb-in-hold to 12000.

AWOS-3
118.375

SEATTLE CENTER
128.15 257.75

UNICOM
122.8 (CTAF) 0



VECUC

UDEYI

JUVUL

WIXOX

YERPU

OXVEN

8000

6800

6300

12000

090°

091°

057°

091°

091°

GP 3.40°

TCH 54

4.1 NM

2 NM

7.1 NM

0.53 UP

1.0% UP

4100 X 60

5224 X 60

35

VGSI and RNAV glidepath not coincident (VGSI Angle 3.00/TCH 45).

REIL Rwy 17 and 9

MRL Rwy 9-27 and 17-35

CATEGORY	A	B	C	D
LPV DA	4269-2 600 (600-2)			NA