

APP CRS  
083°

Rwy Ldg  
TDZE  
3669

Apt Elev  
3703

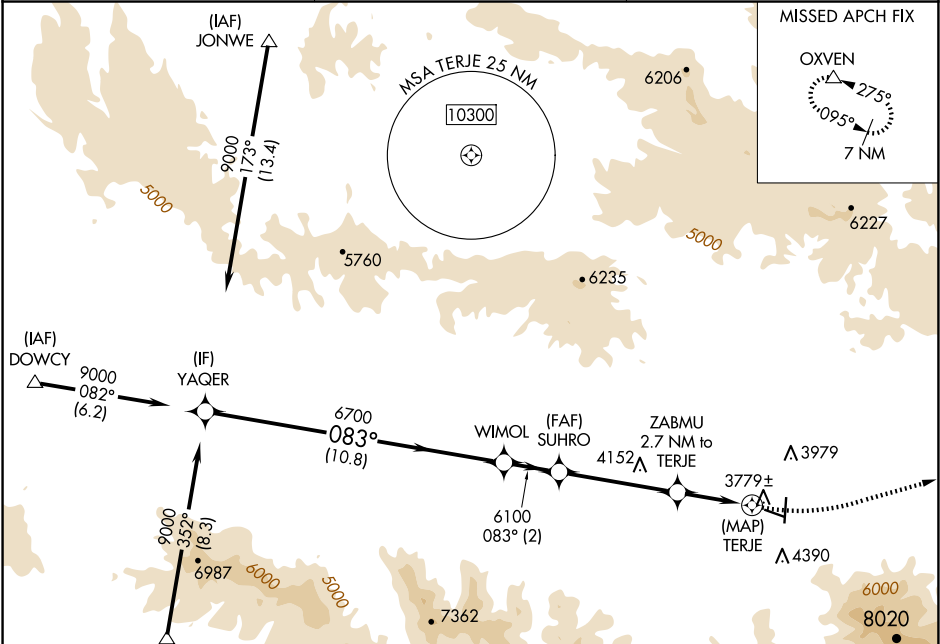
RNAV (GPS) Y RWY 9

GRANT COUNTY RGNL/OGILVIE FLD (GCD)

When local altimeter setting not received, procedure NA.  
Circling NA south of Rwy 9-27. DME/DME RNP-0.3 NA.  
Helicopter visibility reduction below ¾ SM not authorized.

MISSED APPROACH: Climbing left turn to 12000 direct  
OXVEN and hold, continue climb-in-hold to 12000.

|                   |                                 |                          |
|-------------------|---------------------------------|--------------------------|
| AWOS-3<br>118.375 | SEATTLE CENTER<br>128.15 257.75 | UNICOM<br>122.8 (CTAF) 0 |
|-------------------|---------------------------------|--------------------------|



|           |           |
|-----------|-----------|
| ELEV 3703 | TDZE 3669 |
|-----------|-----------|

Procedure Turn NA

9000

083°

6700

6100

4700

TERJE

10.8 NM

2 NM

4.3 NM

2.7 NM

0.5 NM

VGSI and descent angles not coincident  
(VGSI Angle 3.00/TCH 45).

3.03° TCH 40

12000

OXVEN

083°

1.0° UP

4100 X 60

5224 X 60

35

| CATEGORY | A                     | B                       | C                       | D  |
|----------|-----------------------|-------------------------|-------------------------|----|
| RNAV MDA | 4280-1<br>577 (600-1) | 611 (600-1)             | 4280-1¾<br>611 (600-1¾) | NA |
| CIRCLING | 4280-1<br>577 (600-1) | 4520-1¼<br>817 (900-1¼) | 5160-3<br>1457 (1500-3) | NA |

REIL Rwy 17 and 9  
MIRL Rwy 9-27 and 17-35