

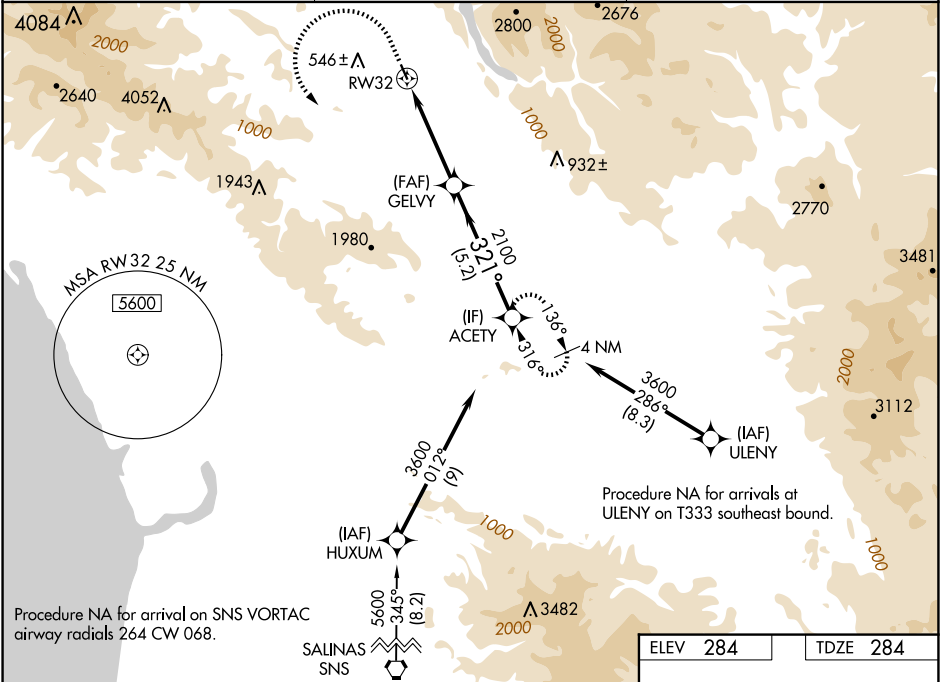
WAAS CH <b>56444</b> <b>W32A</b>	APP CRS <b>321°</b>	Rwy Idg TDZE <b>284</b> Apt Elev <b>284</b>	<b>3095</b>
--	------------------------	---	-------------

RNAV (GPS) RWY 32

SAN MARTIN (E16)

RNP APCH - GPS.	MISSED APPROACH: Climb to 2400 then climbing left turn to 3600 direct ACETY and hold. *Missed approach requires minimum climb of 260 feet per NM to 2400.
<div><div></div><div>Circling NA southwest of Rwy 14-32. Rwy 32 helicopter visibility reduction below ¾ SM NA.</div></div>	

AWOS-3P <b>118.35</b>	NORCAL APP CON <b>124.525 348.675</b>	UNICOM <b>122.7 (CTAF) ①</b>
--------------------------	--	---------------------------------



2400	3600	ACETY	
<div></div>	<div></div>	<div></div>	
<div><div></div><div>2 NM to RW32</div><div></div><div>2 NM</div><div>2.2 NM</div><div>5.2 NM</div><div></div></div>			
CATEGORY	A	B	C
LPV DA*	600-7⁄8	316 (400-7⁄8)	NA
LPV DA	954-1⁄8	670 (700-1⁄8)	NA
LNAV MDA*	1060-1 776 (800-1)	1060-1¼ 776 (800-1¼)	NA
LNAV MDA	1320-1¼ 1036 (1100-1¼)	1320-1 1036 (1100-1½)	NA
<div></div> CIRCLING	1320-1¼ 1036 (1100-1¼)	1320-1½ 1036 (1100-1½)	NA

