

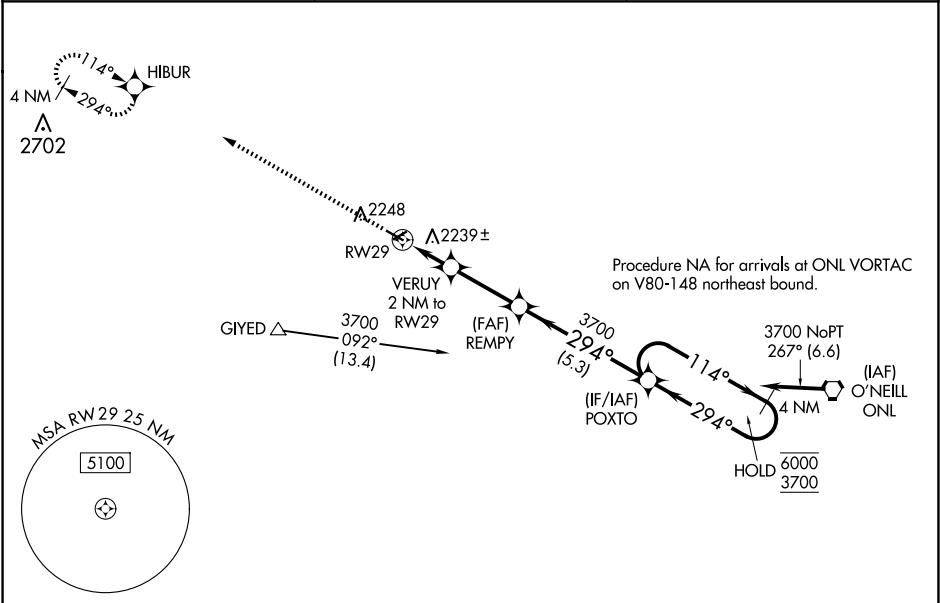
WAAS CH <b>53627</b> <b>W29A</b>	APP CRS <b>294°</b>	Rwy Idg TDZE Apt Elev	<b>3900</b> <b>2130</b> <b>2131</b>
--	------------------------	-----------------------------	---

RNAV (GPS) RWY 29

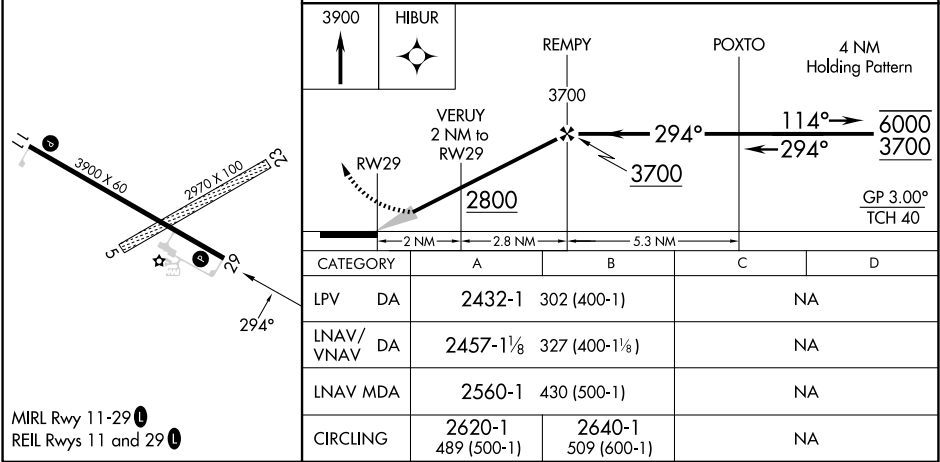
STUART-ATKINSON MUNI (8V2)

RNP APCH - GPS.	MISSED APPROACH: Climb to 3900 direct HIBUR and hold.
Baro-VNAV NA. Circling NA to Rwy 5 and 23. Use ONL altimeter setting; when not received, use ANW altimeter setting and increase LPV DA to 2538 feet and all visibilities to 1 1⁄8 SM, LNAV/VNAV DA to 2563 feet and all visibilities to 1 1⁄2 SM, increase all MDAs 120 feet.	

ONL AWOS-3 <b>121.125</b>	MINNEAPOLIS CENTER <b>128.0 257.95</b>	CTAF <b>122.9 0</b>
------------------------------	---	------------------------



ELEV 2131	TDZE 2130
-----------	-----------



NC-2, 10 JUL 2025 to 07 AUG 2025

NC-2, 10 JUL 2025 to 07 AUG 2025