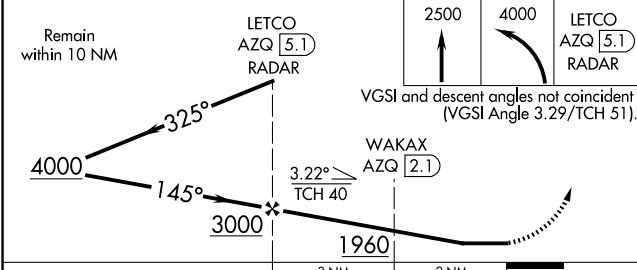
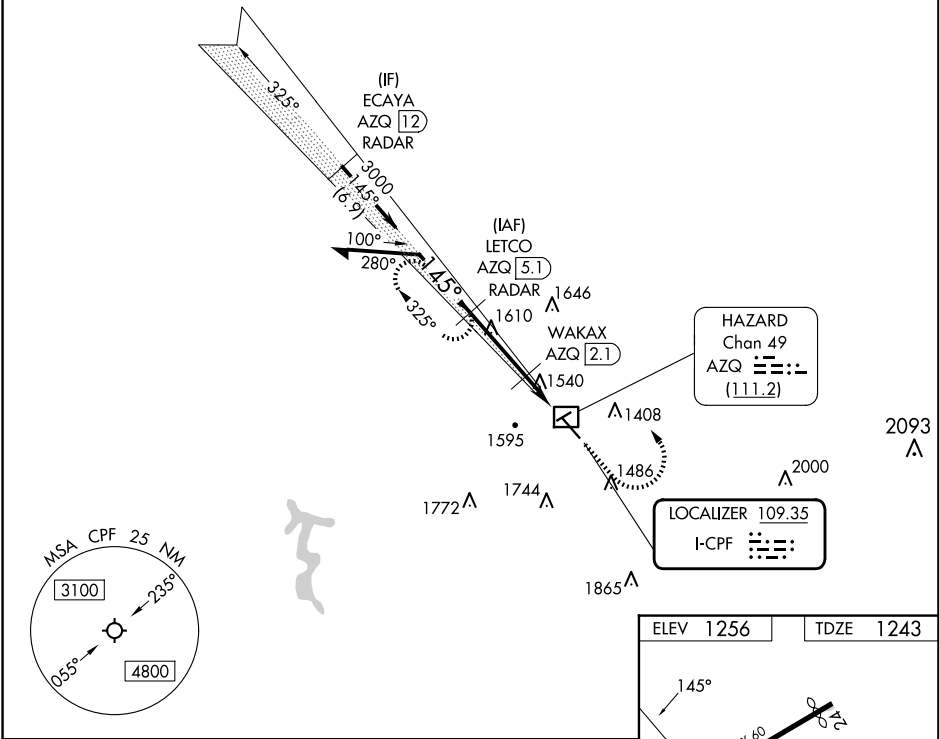


LOC I-CPF <b>109.35</b>	APP CRS <b>145°</b>	Rwy Idg <b>5499</b> TDZE <b>1243</b> Apt Elev <b>1256</b>
----------------------------	------------------------	---

LOC RWY 14  
WENDELL H FORD (CPF')

DME required. RADAR required for procedure entry. RADAR required for missed approach.		MISSED APPROACH: Climb to 2500 then climbing left turn to 4000 to LETCO/AZQ 5.1 DME/RADAR and hold, continue climb-in-hold to 4000.
▼ Circling Rwy 24, 32 NA at night. Simultaneous reception of I-CPF and AZQ DME required. Rwy 14 helicopter visibility reduction below ¾ SM NA. ▲ DME from AZQ DME.		
AWOS-3 <b>119.025</b>	INDIANAPOLIS CENTER <b>126.575 257.85</b>	UNICOM <b>122.7 (CTAF) 0</b>



ELEV 1256	TDZE 1243
MIRL Rwy 14-32 1 REIL Rws 14 and 32 1	
FAF to MAP 5 NM	
Knots	60 90 120 150 180
Min:Seq	5:00 3:20 2:30 2:00 1:40

SE-1, 10 JUL 2025 to 07 AUG 2025

SE-1, 10 JUL 2025 to 07 AUG 2025