

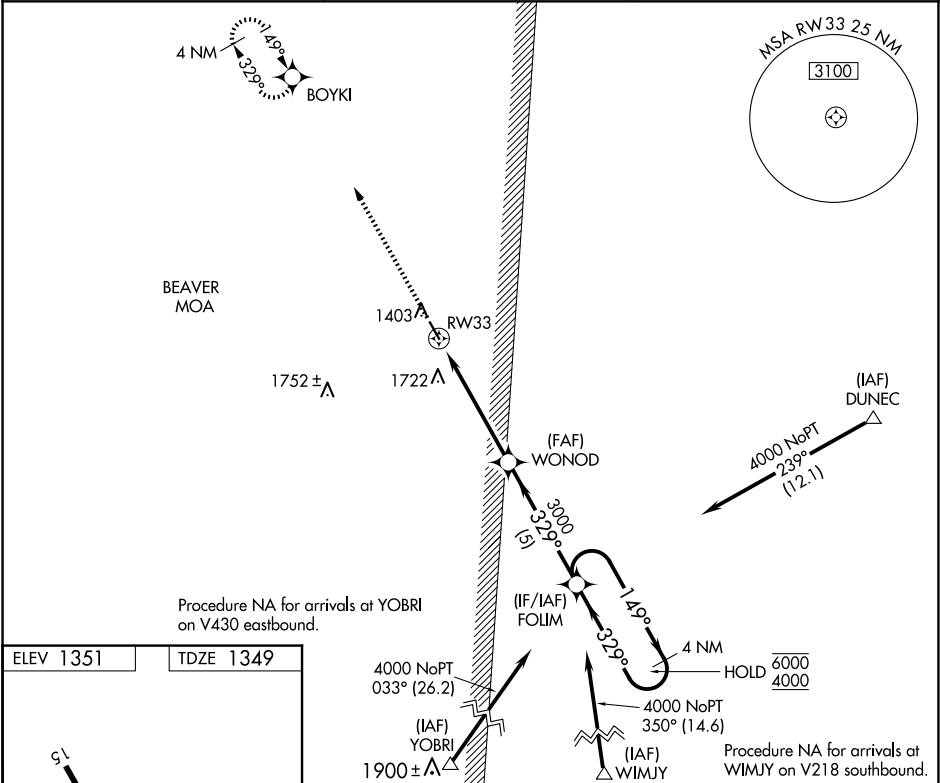
WAAS CH 40226 W33A	APP CRS 329°	Rwy Idg TDZE Apt Elev	3998 1349 1351
--	------------------------	-----------------------------	---

RNAV (GPS) RWY 33

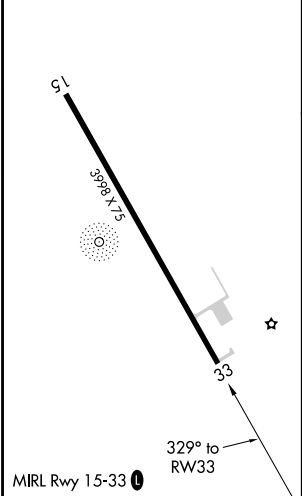
BIGFORK MUNI (F'0Z)



RNP APCH.	MISSED APPROACH: Climb to 4000 direct BOYKI and hold, continue climb-in-hold to 4000.
Rwy 33 helicopter visibility reduction below ¾ SM NA.	

AWOS-3PT 118.025	MINNEAPOLIS CENTER 127.9 281.45	CTAF 122.9 0
----------------------------	---	------------------------



ELEV 1351	TDZE 1349
-----------	-----------



4000 ↑		BOYKI 		FOLIM 4 NM Holding Pattern	
		RW33 1.5 NM to RW33 ↓		WONOD 3000 3.00° TCH 40	
1.5		3.6 NM		5 NM	
149° → 6000		← 329°		← 329° 4000	
CATEGORY		A		B	
LP MDA		1860-1 511 (600-1)		C NA	
LNAV MDA		1860-1 511 (600-1)		D NA	
CIRCLING		1860-1 509 (600-1) 2040-1 689 (700-1)		NA	

NC-1, 10 JUL 2025 to 07 AUG 2025

NC-1, 10 JUL 2025 to 07 AUG 2025