

NDB FOZ	APP CRS	Rwy Idg	3998
345	160°	TDZE	1351
		Apt Elev	1351

NDB RWY 15

BIGFORK MUNI (F'OZ)

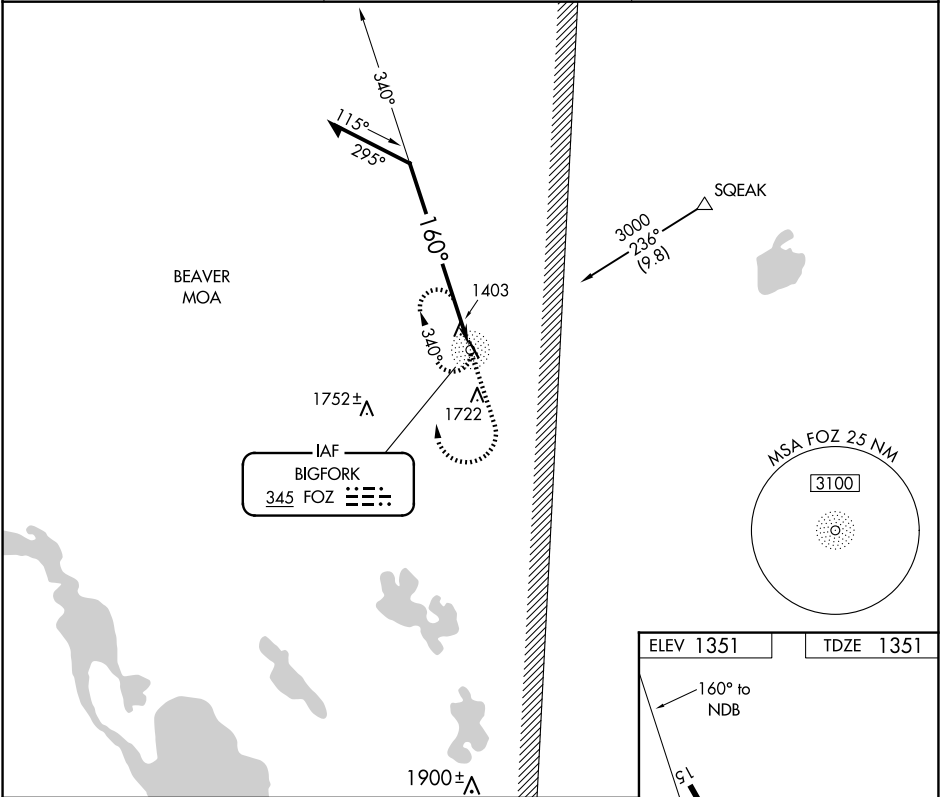
▼

▲ NA

Procedure not authorized when BEAVER MOA is active. Night landing Rwy 33 NA. Helicopter visibility reduction below ¼ SM NA. When local altimeter setting not received, use Grand Rapids altimeter setting and increase all MDA 100 feet.

MISSED APPROACH: Climb to 2200 then climbing right turn to 3000 direct FOZ NDB and hold.

AWOS-3PT 118.025	MINNEAPOLIS CENTER 127.9 281.45	CTAF 122.9 0
---------------------	------------------------------------	-----------------



Remain within 10 NM

FOZ NDB

3000

340°

160°

2200

3000

FOZ

TABLE

CATEGORY	A	B	C	D
S-15	1840-1	489 (500-1)	NA	
CIRCLING	1840-1 489 (500-1)	2040-1 689 (700-1)	NA	

ELEV 1351

TDZE 1351

160° to NDB

340°

398° X 75

33

MIRL Rwy 15-33 0