

WAAS CH <b>63233</b> <b>W35A</b>	APP CRS <b>359°</b>	Rwy Ldg TDZE <b>990</b> Apt Elev <b>1010</b>
--	------------------------	--

RNAV (GPS) RWY 35

RUSSELL COUNTY (K24)

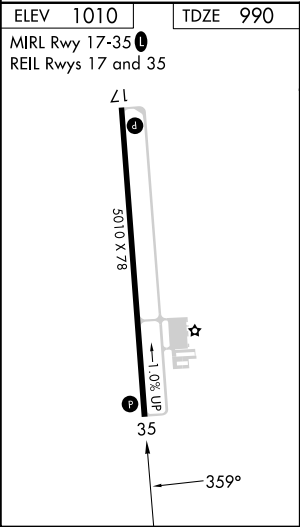
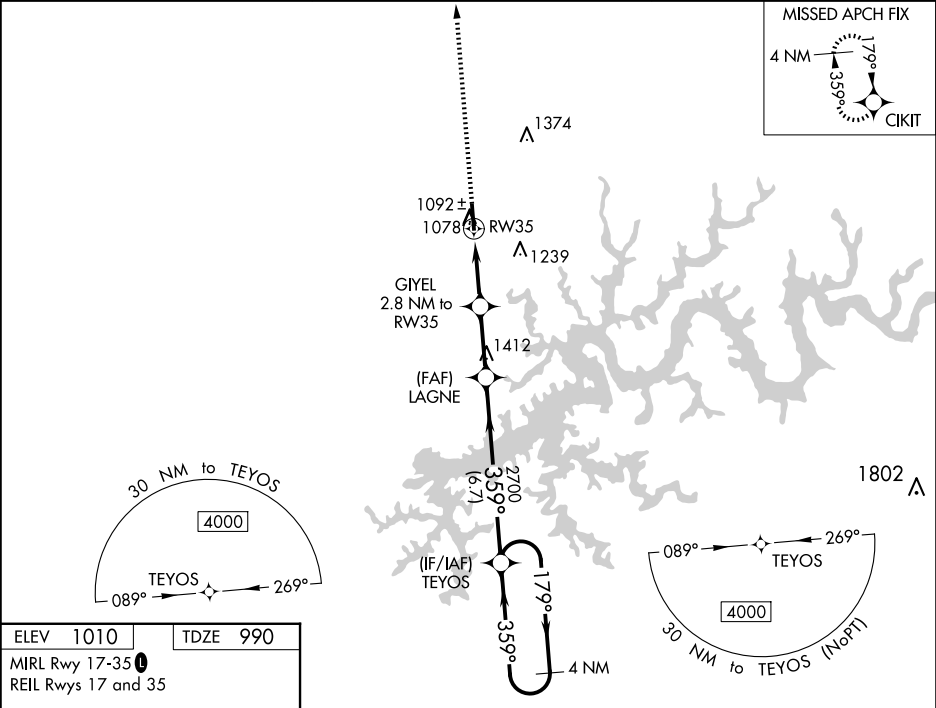
▼

▲ NA

For uncompensated Baro-VNAV systems, LNAV/VNAV NA below -17°C (2°F) or above 54°C (130°F). DME/DME RNP-0.3 NA. Baro-VNAV and VDP NA when using Wayne County altimeter setting. When local altimeter setting not received, use Wayne County altimeter setting and increase all DA 42 feet and all MDA 60 feet. Increase LPV all Cats visibility ¼ mile and LNAV/VNAV all Cats visibility ⅜ mile and LNAV and Circling Cat C/D visibility ¼ mile. Helicopter visibility reduction below ¾ mile NA.

MISSED APPROACH:  
Climb to 4000 direct  
CIKIT and hold.

AWOS-3 <b>119.6</b>	INDIANAPOLIS CENTER <b>124.625 371.925</b>	UNICOM <b>123.0 (CTAF) 0</b>
------------------------	---	---------------------------------



4000	CIKIT	LAGNE	TEYOS	4 NM Holding Pattern
* LNAV only	GIYEL 2.8 NM to RW35	2700	179°	179°
	* 1.1 NM to RW35	* 1880	359°	359°
		2700		GP 3.00° TCH 39
	1.1	1.7	2.6 NM	6.7 NM
CATEGORY	A	B	C	D
LPV DA	1240-7⁄8 250 (300-7⁄8)			
LNAV/VNAV DA	1285-1 1⁄8 295 (300-1 1⁄8)			
LNAV MDA	1360-1 370 (400-1)			
CIRCLING	1540-1 530 (600-1)	1620-1 610 (700-1)	1700-2 690 (700-2)	1700-2 1⁄4 690 (700-2 1⁄4)