

WAAS CH <b>78433</b> <b>W17A</b>	APP CRS <b>179°</b>	Rwy Ldg TDZE Apt Elev	<b>5010</b> <b>1010</b> <b>1010</b>
--	------------------------	-----------------------------	---

RNAV (GPS) RWY 17

RUSSELL COUNTY (K24)

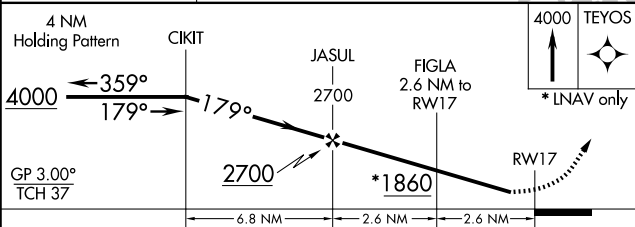
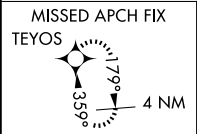
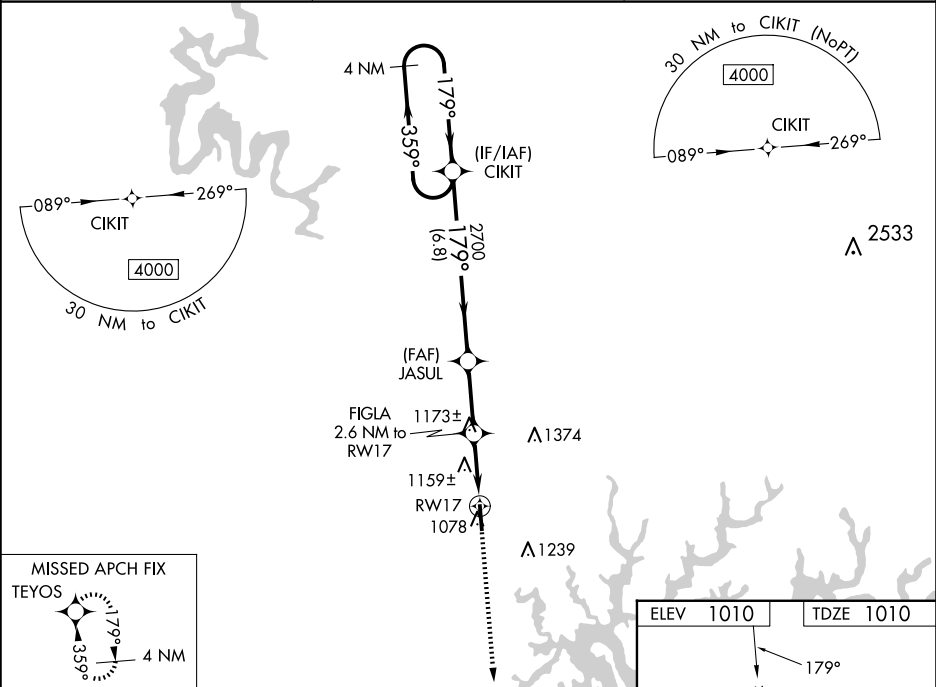
▼

▲ NA

Baro-VNAV NA when using Wayne County altimeter setting. For uncompensated Baro-VNAV systems, LNAV/VNAV NA below -17°C (2°F) or above 54°C (130°F). When local altimeter setting not received, use Wayne County altimeter setting increase all DA 42 feet and increase all MDA 60 feet; increase LPV all Cats ½ mile; LNAV/VNAV all Cats ½ mile and LNAV and Circling Cats C/D visibility ½ mile. DME/DME RNP-0.3 NA. Helicopter visibility reduction below ¾ SM NA.

MISSED APPROACH:  
Climb to 4000 direct  
TEYOS and hold.

AWOS-3 <b>119.6</b>	INDIANAPOLIS CENTER <b>124.625 371.925</b>	UNICOM <b>123.0 (CTAF) 0</b>
------------------------	---	---------------------------------



CATEGORY	A	B	C	D
LPV DA	1346-1½		336 (400-1½)	
LNAV/VNAV DA	1424-1¾		414 (500-1¾)	
LNAV MDA	1420-1	410 (500-1)	1420-1½	410 (500-1½)
CIRCLING	1540-1 530 (600-1)	1620-1 610 (700-1)	1700-2 690 (700-2)	1700-2¼ 690 (700-2¼)

