

VOR/DME ECG	APP CRS	Rwy Idg	N/A
<b>115.75</b>	<b>050°</b>	TDZE	N/A
Chan <b>104</b> (Y)		Apt Elev	<b>18</b>

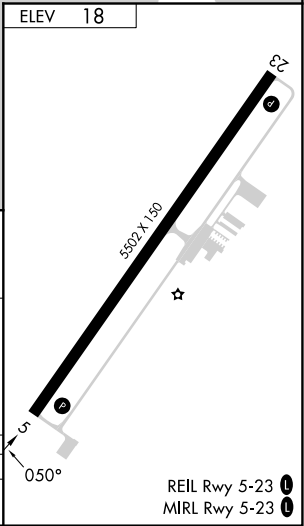
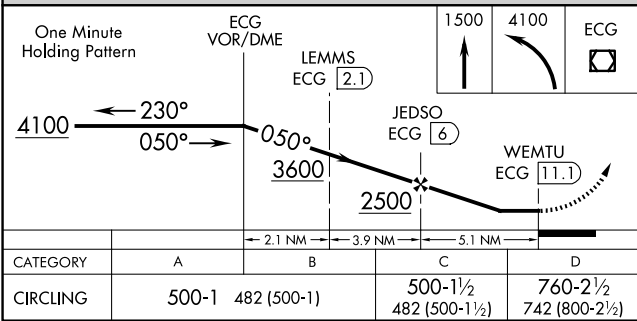
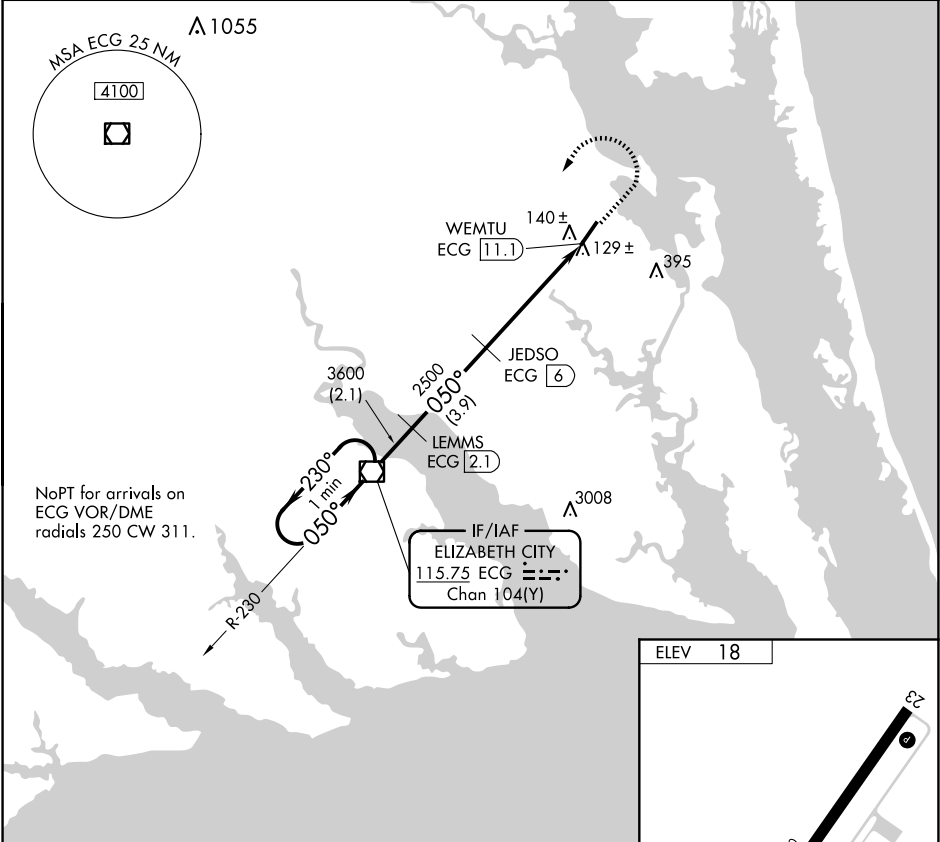
VOR/DME-A  
CURRITUCK COUNTY RGNL (ONX)

When local altimeter setting not received, use Oceana NAS/ Apollo Soucek altimeter setting and increase all MDA 60 feet.

Procedure NA when tethered balloon located approximately 11.4 NM southwest of airport is flying.

MISSED APPROACH: Climb to 1500 then climbing left turn to 4100 direct ECG VOR/DME and hold, continue climb-in-hold to 4100.

AWOS-3 <b>119.775</b>	OCEANA APP CON <b>123.9 266.8</b>	CTAF <b>122.9 0</b>
--------------------------	--------------------------------------	------------------------



SE-2, 10 JUL 2025 to 07 AUG 2025

SE-2, 10 JUL 2025 to 07 AUG 2025