

WAAS CH <b>97408</b> <b>W23A</b>	APP CRS <b>225°</b>	Rwy Idg <b>5502</b> TDZE <b>18</b> Apt Elev <b>18</b>
--	------------------------	---

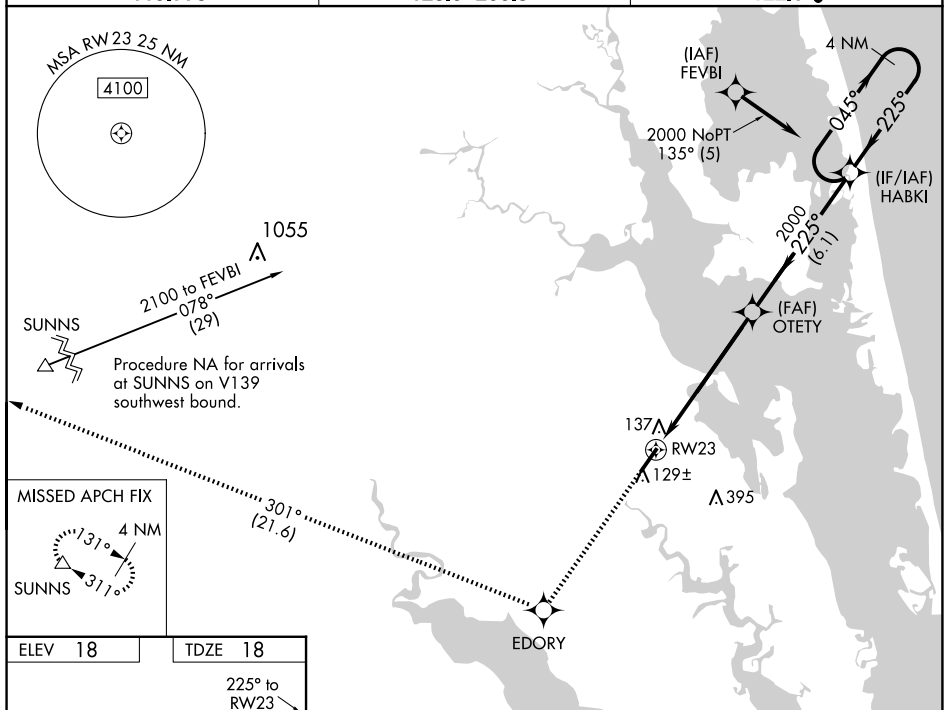
RNAV (GPS) RWY 23  
CURRITUCK COUNTY RGNL (ONX)

RNP APCH.

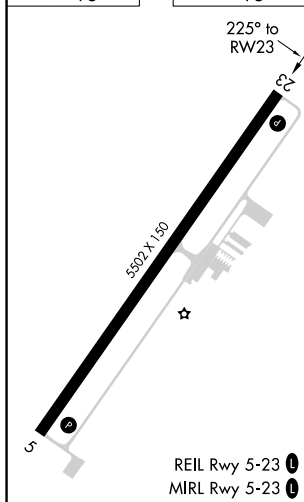
**T** For uncompensated Baro-VNAV systems, LNAV/VNAV NA below -15°C (5°F) or above 49°C (120°F). Rwy 23 helicopter visibility reduction below  $\frac{3}{4}$  SM NA.

**MISSED APPROACH:** Climb to 2000  
direct EDORY and right turn on track  
301° to SUNNS and hold.

AWOS-3 119.775	OCEANA APP CON 123.9 266.8	CTAF 122.9 0
-------------------	-------------------------------	-----------------



ELEV 18		TDZE 18
---------	--	---------



2000 ↑	EDORY ✦	tr 301°	SUNNS △	OTETY 2000	HABKI 4 NM Holding Pattern
* LNAV only.					
CATEGORY	A	B	C	D	
LPV DA	384-1¼ 366 (400-1¼)				
LNAV/ VNAV DA	424-1½ 406 (500-1½)				
LNAV MDA	400-1 382 (400-1)		400-1¼ 382 (400-1¼)		
CIRCLING	440-1 422 (500-1)	480-1 462 (500-1)	480-1½ 462 (500-1½)	760-2½ 742 (800-2½)	