

MILTON, FLORIDA

AL-9244 (FAA)

24137

APP CRS	Rwy Idg	3703
003°	TDZE	82
	Apt Elev	82

RNAV (GPS) RWY 36

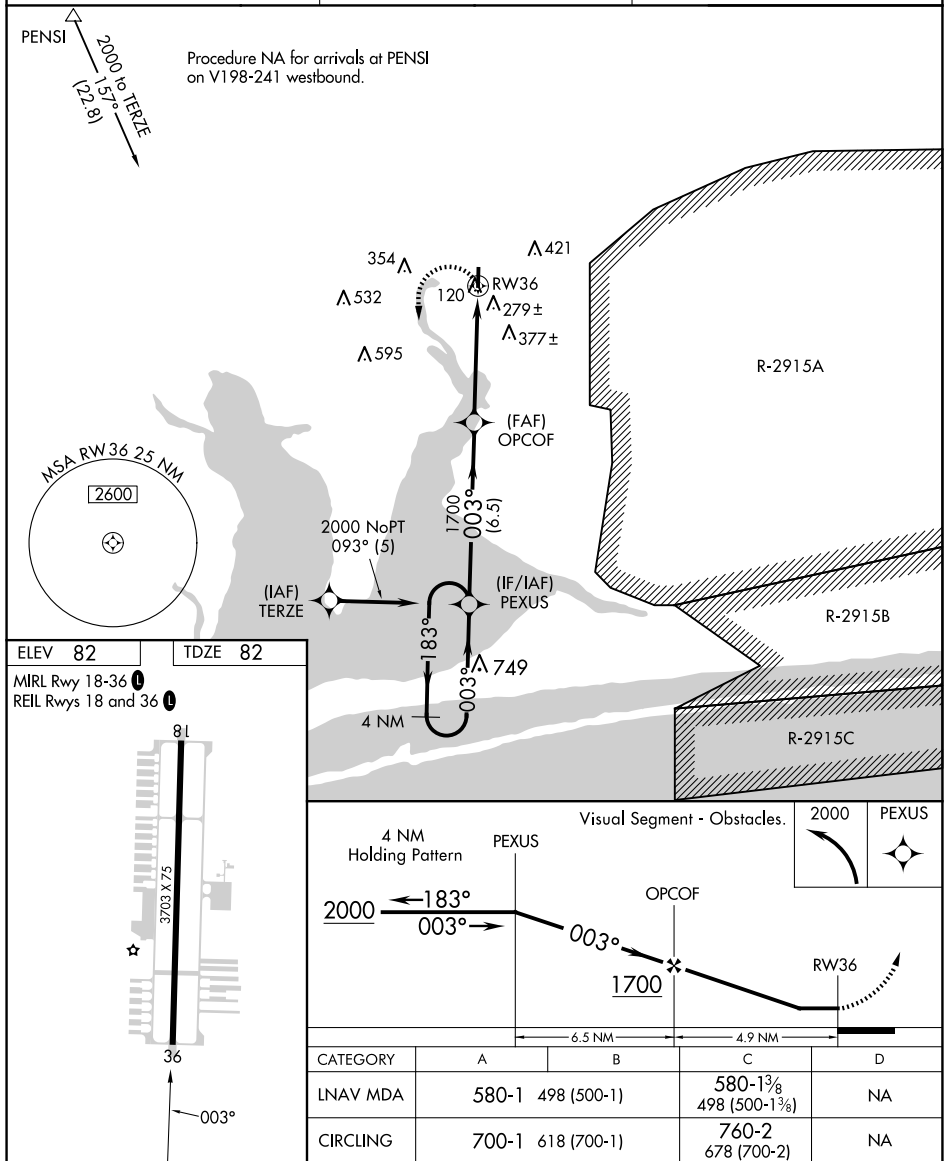
PETER PRINCE FLD (2R4)

RNP APCH.

T	Rwy 36 helicopter visibility reduction below 1 SM NA.
A NA	Use Pensacola Intl altimeter setting; when not received, use Crestview altimeter setting and increase all MDA 40 feet; increase LNAV visibility Cat C 1/2 SM. Procedure NA at night.

MISSED APPROACH:
Climbing left turn to 2000
direct PEXUS and hold.

PENSACOLA APP CON 124.85 235.775	GCO 121.725	AUNICOM 122.975 (CTAF) 0
--	-----------------------	------------------------------------



MILTON, FLORIDA
Amdt 1D 24FEB22

30°38'N-87°00'W

PETER PRINCE FLD (2R4)

RNAV (GPS) RWY 36

SE-3, 10 JUL 2025 to 07 AUG 2025