

WAAS CH 78100 W23A	APP CRS 226°	Rwy Idg 4200 TDZE 21 Apt Elev 21
--	------------------------	---

RNAV (GPS) RWY 23

TAMPA EXEC (VDF')

RNP APCH-GPS.

▼

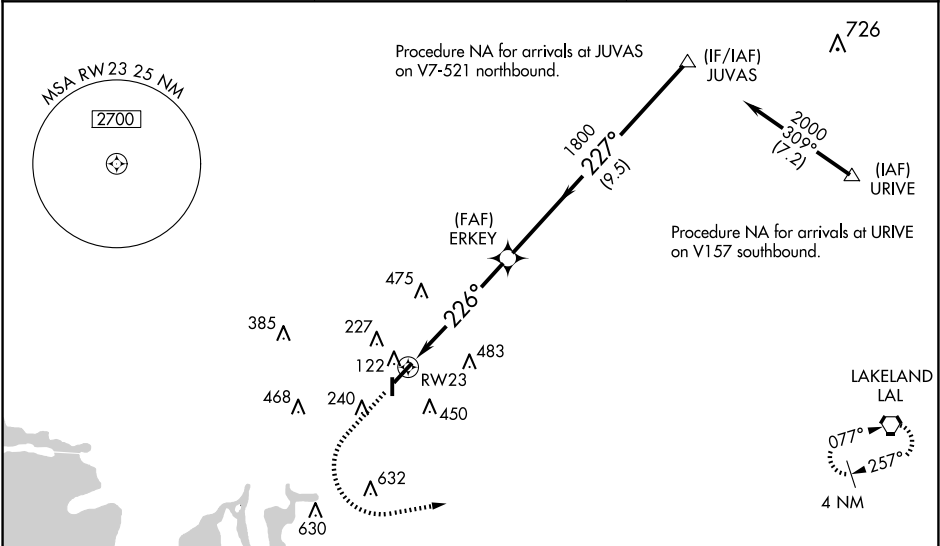
▲

Inop table does not apply to LPV and LNAV Cat A/B. Baro-VNAV NA when using Tampa Intl altimeter setting. For uncompensated Baro-VNAV systems, LNAV/VNAV NA below -15°C (5°F) or above 54°C (130°F). Rwy 23 helicopter visibility reduction below ¾ SM NA. When local altimeter setting not received, use Tampa Intl altimeter setting and increase LPV DA to 323 feet, LNAV/VNAV DA to 513; increase all MDAs 40 feet, and LNAV and Circling Cat C visibilities ¼ SM. Circling Rwy 18, 36 NA at night.

MALSR

MISSED APPROACH:
Climb to 800 then climbing left turn to 2700 direct to LAL VORTAC and hold.

AWOS-3 121.125	TAMPA APP CON 119.9 290.3	UNICOM 122.7 (CTAF) 0
--------------------------	-------------------------------------	--



ELEV 21 D TDZE 21

REIL Rwys 5, 18, and 36 1
MRL Rwys 5-23 and 18-36 1

	800	2700	LAL	
	ERKEY	JUVAS	Procedure Turn NA	
	1800	1800	GP 3.10°	TCH 40
	5.3 NM	9.5 NM		
CATEGORY	A	B	C	D
LPV DA	298-1	277 (300-1)		NA
LNAV/VNAV DA	488-1½	467 (500-1½)		NA
LNAV MDA	560-1	539 (600-1)		NA
CIRCLING	560-1 539 (600-1)	760-1 739 (800-1)	800-2¼ 779 (800-2¼)	NA