

APP CRS
008°

Rwy Ldg
TDZE
Apt Elev

4199
5999
5999

RNAV (GPS) RWY 1

VALLE (40G)

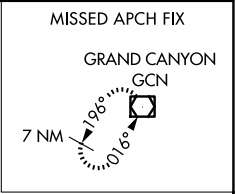
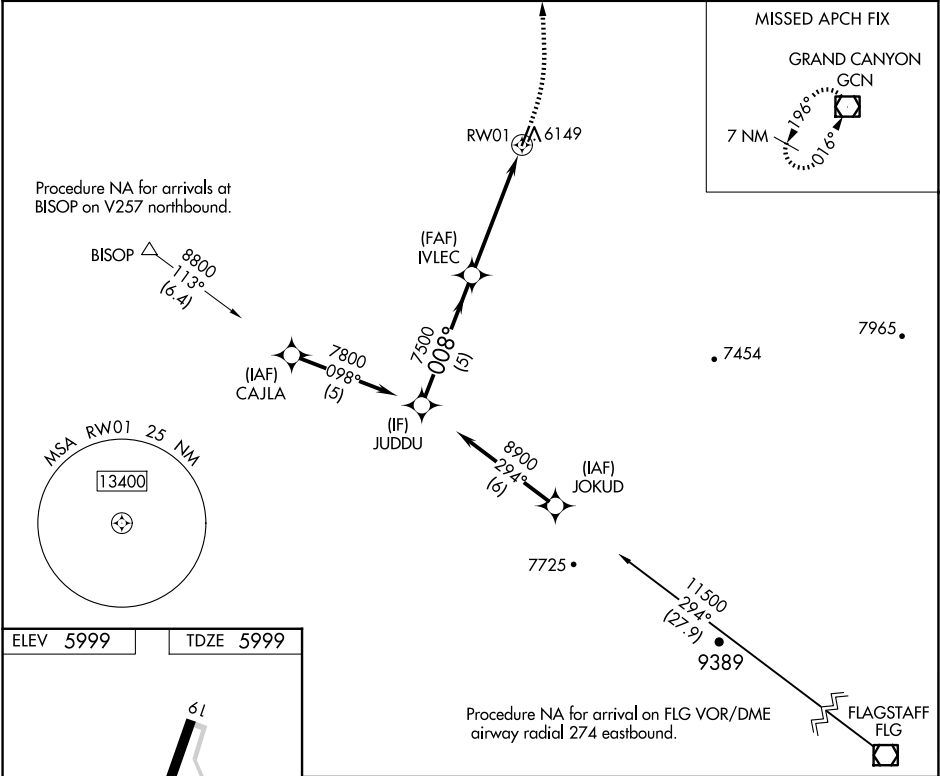
RNP APCH

NA

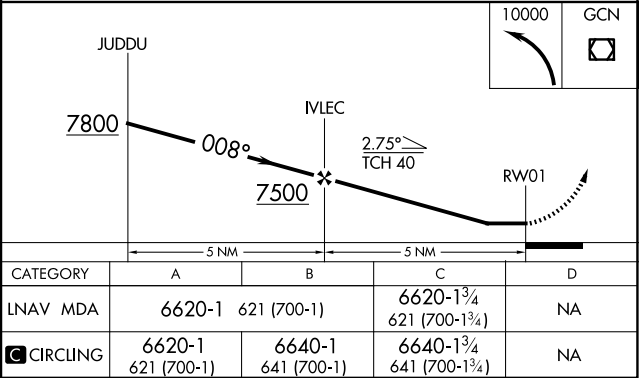
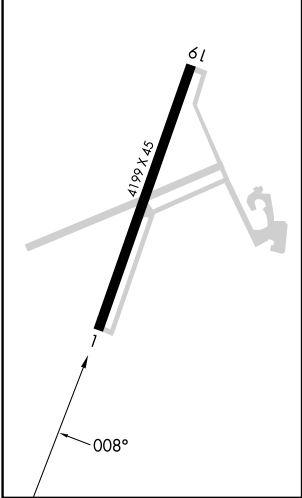
Procedure NA at night. Rwy 1 helicopter visibility reduction below 1 SM NA. Use Grand Canyon Ntl Park altimeter setting; when not received, procedure NA.

MISSED APPROACH: Climbing left turn to 10000 direct GCN VOR/DME and hold.

GCN ASOS 124.3	LOS ANGELES CENTER 124.85 319.2	UNICOM 122.8 (CTAF)
-------------------	------------------------------------	------------------------



ELEV 5999	TDZE 5999
-----------	-----------



SW-4, 10 JUL 2025 to 07 AUG 2025

SW-4, 10 JUL 2025 to 07 AUG 2025