

WAAS CH <b>99425</b> <b>W23A</b>	APP CRS <b>229°</b>	Rwy Idg <b>4589</b> TDZE <b>45</b> Apt Elev <b>45</b>
--	------------------------	---

RNAV (GPS) RWY 23

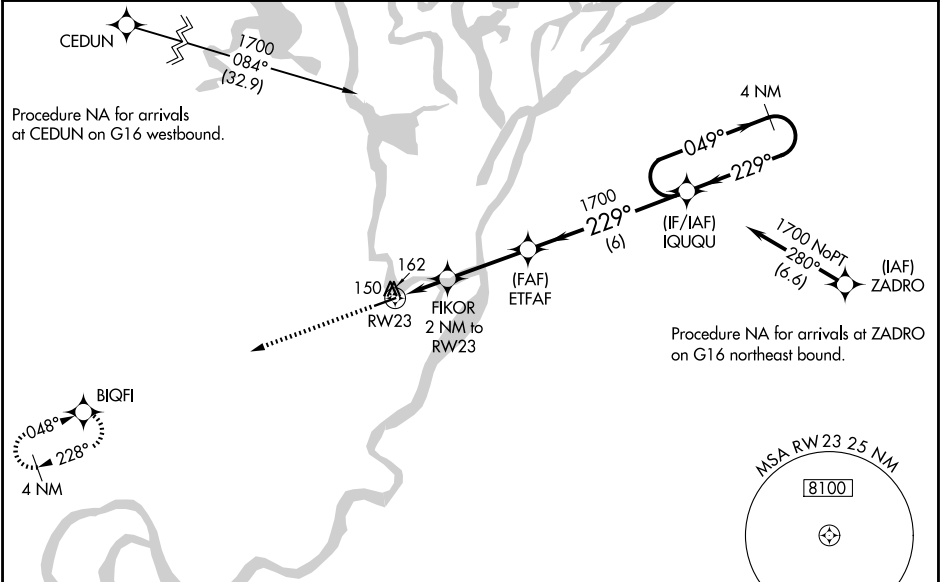
NUIQSUT (AQT) (PAQT)

⚠

For uncompensated Baro-VNAV systems, LNAV/VNAV NA below -25°C (-13°F) or above 54°C (130°F). DME/DME RNP-0.3 NA. Baro-VNAV NA with Deadhorse altimeter setting. When local altimeter setting not received, use Deadhorse altimeter setting and increase all DA 123 feet and all MDA 140 feet, increase LPV all Cats and LNAV Circling Cat C visibility ¼ mile, increase LNAV/VNAV all Cats and LNAV Cat C visibility ½ mile.

MISSED APPROACH:  
Climb to 1700 direct BIQFI and hold.

ASOS <b>135.35</b>	ANCHORAGE CENTER <b>119.4</b>	DEADHORSE RADIO <b>122.5</b>	CTAF <b>122.8</b>
-----------------------	----------------------------------	---------------------------------	----------------------



ELEV 45

TDZE 45

MIRL Rwy 5-23

REIL Rwy 23

1700		BIQFI	VGSi and RNAV glidepath not coincident (VGSi Angle 3.00°/TCH 33).	
* LNAV only		FIKOR 2 NM to RW23	ETFAF	IQUQU 4 NM Holding Pattern
RW23		720*	1700	1700
2 NM		3.1 NM	6 NM	GP 3.00° TCH 52
CATEGORY	A	B	C	D
LPV DA	295-1	250 (300-1)		NA
LNAV/VNAV DA	369-1	324 (400-1)		NA
LNAV MDA	480-1	435 (500-1)	480-1⅓ 435 (500-1⅓)	NA
CIRCLING	520-1	475 (500-1)	520-1½ 475 (500-1½)	NA

AK, 12 JUN 2025 to 07 AUG 2025

AK, 12 JUN 2025 to 07 AUG 2025