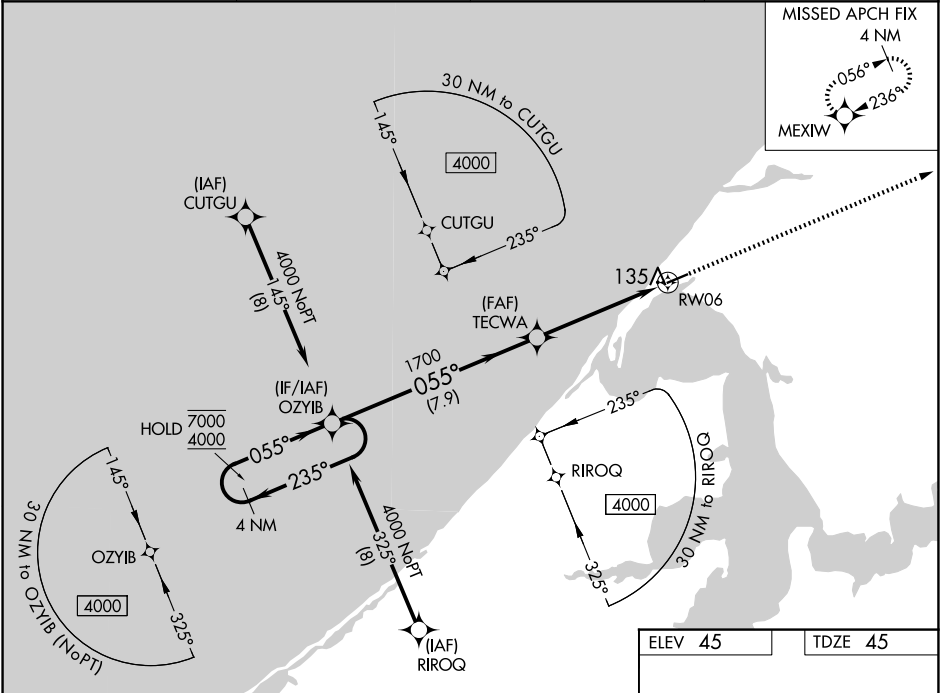


WAAS CH <b>50542</b> <b>W06A</b>	APP CRS <b>055°</b>	Rwy Idg TDZE Apt Elev	<b>4494</b> <b>45</b> <b>45</b>
--	------------------------	-----------------------------	---------------------------------------

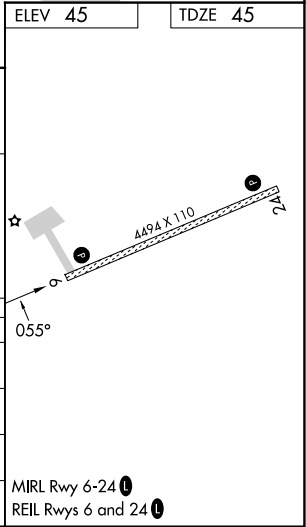
RNAV (GPS) RWY 6  
WAINWRIGHT (AWI) (PAWI)

RNP APCH - GPS.	MISSED APPROACH: Climb to 4000 direct MEXIW and hold, continue climb-in-hold to 4000.
⚠ For uncompensated Baro-VNAV systems, LNAV/VNAV NA below -20°C or above 54°C.	

ASOS-3 <b>132.25</b>	ANCHORAGE CENTER <b>135.3 239.25</b>	BARROW RADIO <b>122.5</b>	CTAF <b>122.8 0</b>
-------------------------	---	------------------------------	------------------------



4 NM Holding Pattern		VGSI and RNAV glidepath not coincident (VGSI Angle 3.00/TCH 31).		4000	MEXIW
7000 ← 235°		OZYIB		↑	✦
4000 → 055°		TECWA			
GP 3.00°		1700		1 NM to RW06	RW06
TCH 45		7.9 NM		4 NM	1 NM
CATEGORY	A	B	C	D	
LPV DA		295-1	250 (300-1)		
LNAV/VNAV DA		316-1	271 (300-1)		
LNAV MDA		400-1	355 (400-1)		
CIRCLING	460-1 415 (500-1)	500-1 455 (500-1)	500-1½ 455 (500-1½)	600-2 555 (600-2)	



AK, 12 JUN 2025 to 07 AUG 2025

AK, 12 JUN 2025 to 07 AUG 2025