

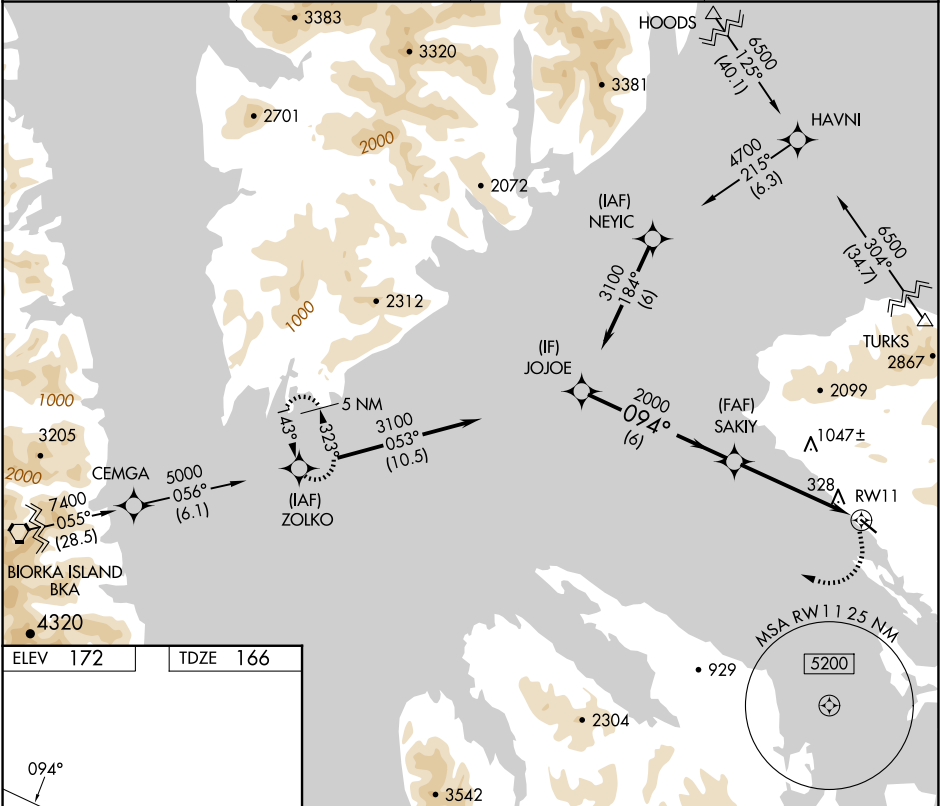
APP CRS	Rwy Idg	4000
094°	TDZE	166
	Apt Elev	172

RNAV (GPS) RWY 11

KAKE (AFE)(PAFE)

RNP APCH.	MISSED APPROACH: Climbing right turn to 5000 direct ZOLKO and hold.
<div><div></div><div>Circling NA north of Rwy 11-29. When local altimeter setting not received, use Petersburg James A Johnson altimeter setting and increase all MDAs 100 feet.</div><div>Circling Rwy 29 NA at night. Rwy 11 helicopter visibility reduction below ¾ SM NA.</div></div>	

AWOS-3P	ANCHORAGE CENTER	SITKA RADIO	CTAF
135.25	132.175	122.65 121.3	122.9 0



ELEV 172

TDZE 166

094°

0.5% UP

4000 X 100

0

25

REIL Rwy 11 0

MIRL Rwy 11-29 0

VGSI and descent angles not coincident (VGSI Angle 3.00/TCH 41).			
<div><div>JOJOE</div><div>3100</div><div>Procedure Turn NA</div><div>094°</div><div>SAKIY</div><div>2000</div><div>3.41° TCH 41</div><div>RW11</div><div>6 NM</div><div>5 NM</div></div>			
CATEGORY	A	B	C
LNNAV MDA	1120-1¼ 954 (1000-1¼)	1120-1½ 954 (1000-1½)	1120-3 954 (1000-3)
CIRCLING	1120-1¼ 948 (1000-1¼)	1120-1½ 948 (1000-1½)	1120-3 948 (1000-3)