

APP CRS
216°

Rwy Ldg
TDZE
80

Apt Elev
80

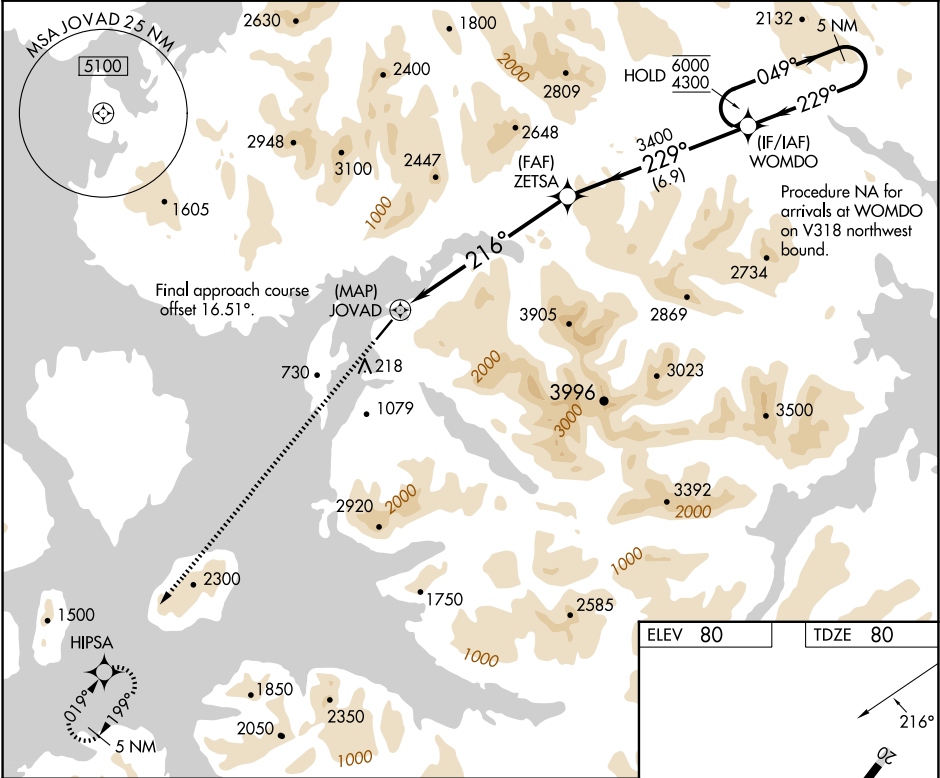
RNAV (GPS) RWY 20
Klawock (AKW) (PAKW)

RNP APCH-GPS.

Procedure NA at night. Rwy 20 helicopter visibility reduction below 1 SM NA. Circling NA east of Rwy 2-20.

MISSED APPROACH: Climbing left turn to 6000 direct HIPSA and hold, continue climb-in-hold to 6000.

ASOS 135.45	ANCHORAGE CENTER 118.5 284.6	KETCHIKAN RADIO 122.25 0	CTAF 120.9
----------------	---------------------------------	-----------------------------	---------------



6000 HIPSA

JOVAD

ZETSA

WOMDO

5 NM Holding Pattern

0.5

7.2 NM

6.9 NM

CATEGORY	A	B	C	D
RNAV MDA	2340-1¼ 2260 (2300-1¼)	2340-1½ 2260 (2300-1½)	NA	NA
CIRCLING	2340-1¼ 2260 (2300-1¼)	2340-1½ 2260 (2300-1½)	NA	NA

ELEV 80

TDZE 80

REIL Rwy 2 and 20

MIRL Rwy 2-20 0