

WAAS CH 70323 W18A	APP CRS 184°	Rwy Ldg TDZE 777 Apt Elev 777
--	------------------------	---

RNAV (GPS) RWY 18

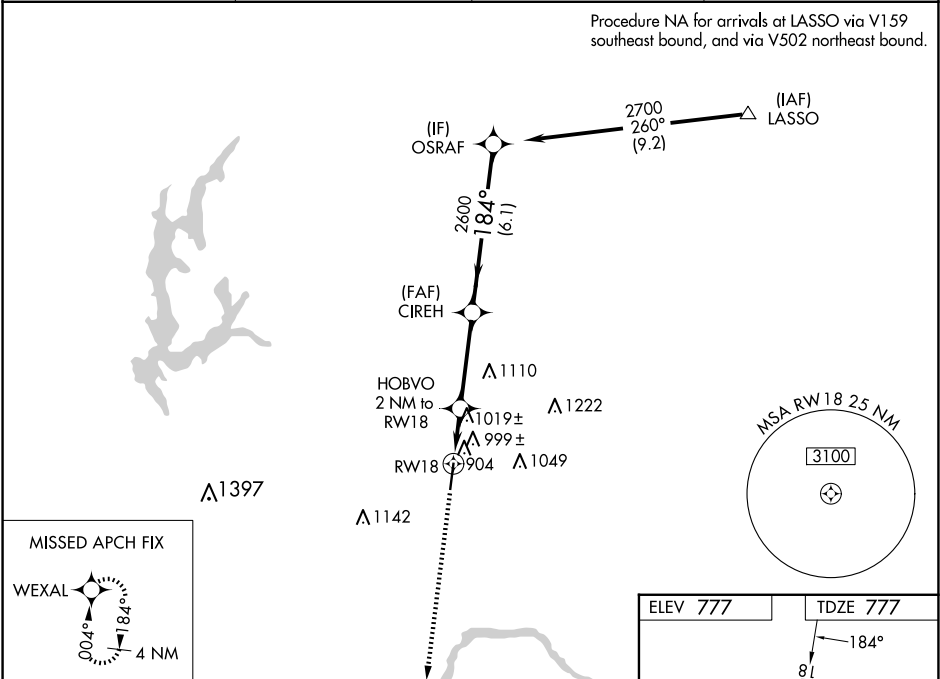
MIDWEST NTL AIR CENTER (GPH)

NA

For uncompensated Baro-VNAV systems, LNAV/VNAV NA below -16°C (4°F) or above 54°C (130°F). DME/DME RNP- 0.3 NA.
Baro-VNAV and VDP NA when using Kansas City Intl altimeter setting.
Obtain local altimeter setting on CTAF; when not received, use Kansas City Intl altimeter setting and increase all DAs 79 feet and all LPV and LNAV/VNAV visibilities ¼ mile; increase all MDAs 80 feet and circling visibility Cat C ½ mile.

MISSED APPROACH: Climb to 2700 direct WEXAL and hold.

AWOS-3P 120.275	KANSAS CITY APP CON 118.4 307.35	CLNC DEL 118.2	UNICOM 122.7 (CTAF) 1
---------------------------	--	--------------------------	--



2700

WEXAL

VGSI and RNAV glidepath not coincident (VGSI Angle 3.50/TCH 59).

OSRAF

2700

Procedure Turn NA

GP 3.00°

TCH 51

*LNAV only.

HOBVO 2 NM to RW18

CIREH

184°

2600

1460*

1.2 NM

0.8 NM

3.5 NM

6.1 NM

CATEGORY	A	B	C	D
LPV DA	1189-1½ 412 (500-1½)			NA
LNAV/ VNAV DA	1324-2 547 (600-2)			NA
LNAV MDA	1280-1	503 (600-1)	1280-1½ 503 (600-1½)	NA
CIRCLING	1300-1 523 (600-1)	1320-1 543 (600-1)	1360-1½ 583 (600-1½)	NA

