

OXFORD, MAINE

AL-9228 (FAA)

23222

WAAS CH <b>48929</b> <b>W15A</b>	APP CRS <b>148°</b>	Rwy Idg <b>2997</b> TDZE <b>345</b> Apt Elev <b>345</b>
--	------------------------	---

RNAV (GPS) RWY 15  
OXFORD COUNTY RGNL (81B)

OXFORD COUNTY RGNL (81B)

**T**

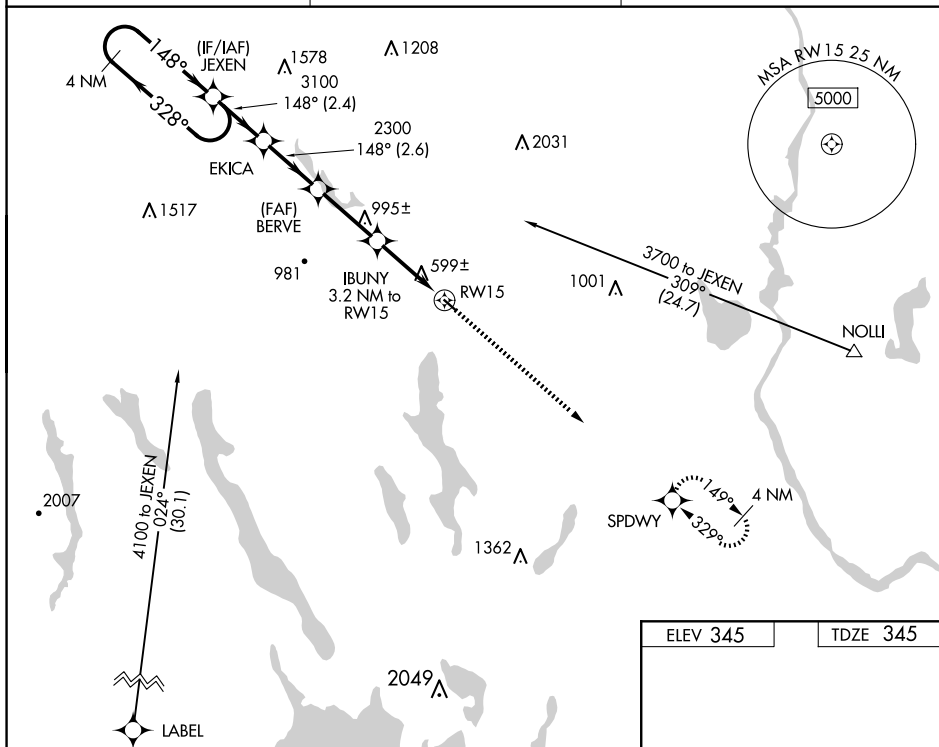
**A NA**

DME/DME RNP-0.3 NA. Procedure NA at night. Use Auburn/Lewiston altimeter setting; when not received, use Fryeburg altimeter setting and increase all MDAs 40 feet. Helicopter visibility reduction below 1 SM NA.

**MISSED APPROACH:** Climb to 3600 direct SPDWY and hold, continue climb-in-hold to 3600.

LEW AWOS-3  
**118.025**

PORTLAND APP CON ★  
125.5 353.9

UNICOM  
122.8 (CTAF) **L**

NE-1, 10 JUL 2025 to 07 AUG 2025

Visual Segment - Obstacles.

4 NM Holding Pattern

JEXEN

EKICA

BERVE

IBUNY 3.2 NM to RW15

RW15

3700

328°

148°

148°

3100

2300

1400

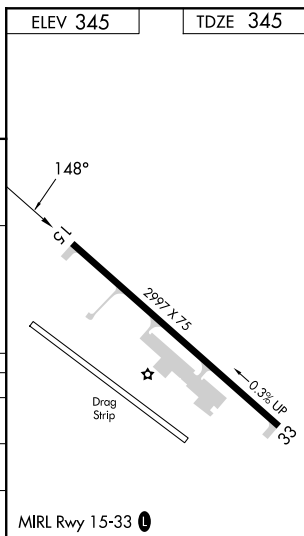
2.4 NM

2.6 NM

2.8 NM

3.2 NM

CATEGORY	A	B	C	D
LP MDA	900-1	555 (600-1)	NA	
LNAV MDA	1140-1 795 (800-1)	1140-1¼ 795 (800-1¼)	NA	
CIRCLING	1220-1¼ 875 (900-1¼)	1400-1½ 1055 (1100-1½)	NA	



OXFORD, MAINE  
Orig-D 08SEP22

44°09'N-70°29'W

OXFORD COUNTY RGNL (81B)  
RNAV (GPS) RWY 15