

APP CRS
311°

Rwy Idg
4507

TDZE
322

Apt Elev
332

RNAV (GPS) RWY 32

DAWSON MUNI (16J)

RNP APCH

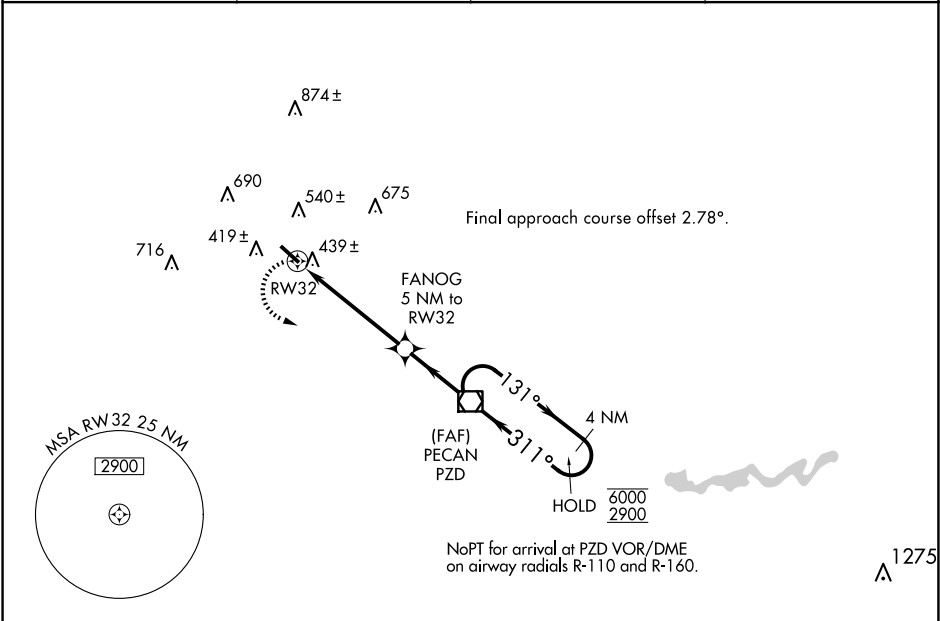
▼

NA

Rwy 32 helicopter visibility reduction below $\frac{3}{4}$ SM NA.
Use Albany altimeter setting. When Albany altimeter settings not received, use Americus altimeter setting and increase all MDAs 20 feet.

MISSED APPROACH: Climbing left turn to 2900 direct PZD VOR/DME and hold, continue climb-in-hold to 2900.

AWOS-3PT 118.8	ABY ASOS 133.05	JACKSONVILLE CENTER 125.75 363.075	UNICOM 122.8 (CTAF) 0
--------------------------	---------------------------	--	---------------------------------



ELEV 332

TDZE 322

2900

PZD

VGSI and descent angles not coincident (VGSI Angle 3.00/TCH 48).

4507 X 75

1.0° UP

311°

MIRL Rwy 14-32 0

2900

PZD

VGSI and descent angles not coincident (VGSI Angle 3.00/TCH 48).

4507 X 75

1.0° UP

311°

MIRL Rwy 14-32 0

4507 X 75

1.0° UP

311°

MIRL Rwy 14-32 0

CATEGORY	A	B	C	D
LNAV MDA	760-1	438 (500-1)	NA	
CIRCLING	960-1	628 (700-1)	NA	

DAWSON, GEORGIA

Orig-D 26MAR20

31°45'N-84°25'W

DAWSON MUNI (16J)

RNAV (GPS) RWY 32