

APP CRS
099°

Rwy Idg
3200

TDZE
400

Apt Elev
400

RNAV (GPS) RWY 10

WHITFORDS (B16)

RNP APCH.

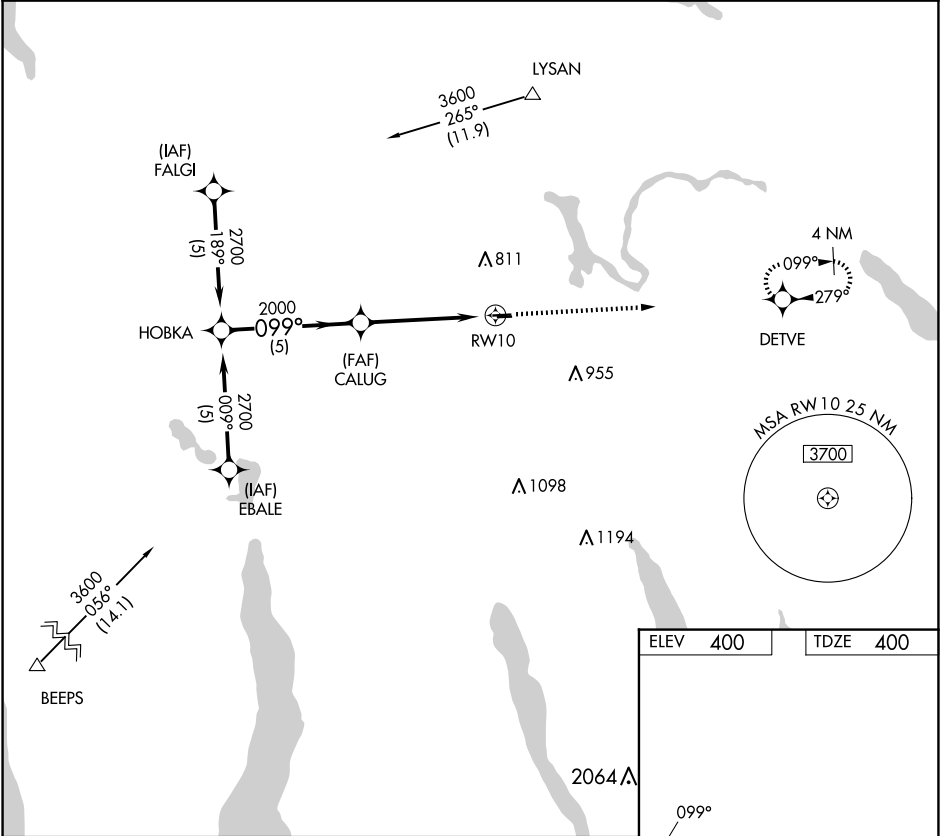
▼

▲ NA

Use Syracuse altimeter setting. Procedure NA at night.
Rwy 10 helicopter visibility reduction below 1 SM NA.

MISSED APPROACH: Climb to 3000 direct DETVE WP and hold.

SYRACUSE APP CON 126.125 269.125	UNICOM 122.8 (CTAF)	122.7
--	-------------------------------	--------------



HOBKA

2700

099°

CALUG

2000

3.04°

TCH 40

RW10

5.0 NM

4.8 NM

3000

DETVE

099°

3630 X 60

28

2800 X 100

CATEGORY	A	B	C	D
LNAV MDA	1020-1	620 (700-1)	NA	

MIRL Rwy 10-28