

WAAS CH 63224 W07A	APP CRS 072°	Rwy Idg 4299 TDZE 2653 Apt Elev 2653
--	------------------------	---

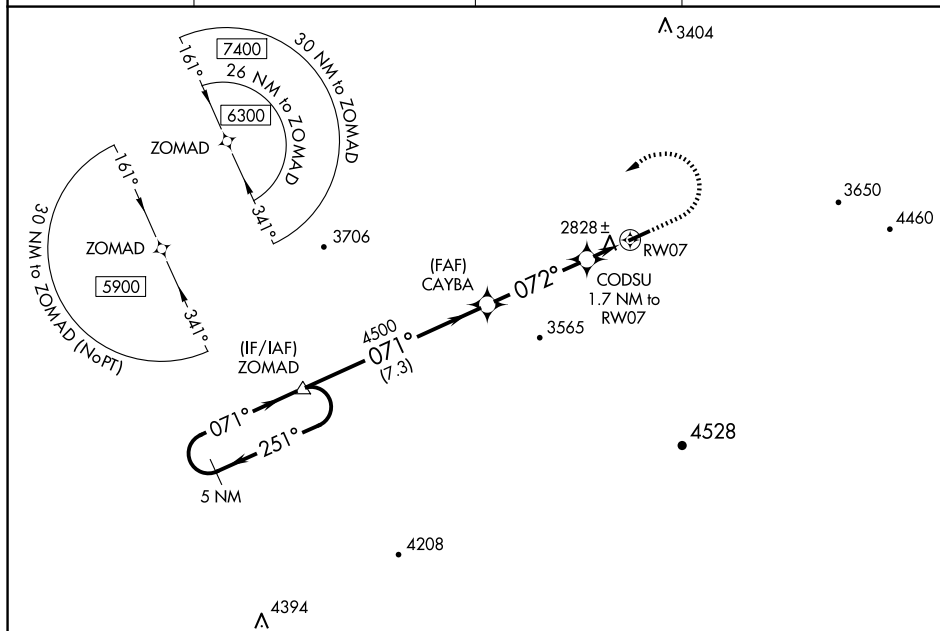
RNAV (GPS) RWY 7

TAZEVELL COUNTY (JFZ)

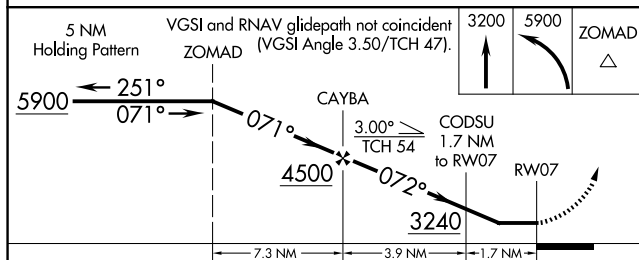
⚠ DME/DME RNP-0.3 NA. Visibility reduction by helicopters NA. When local altimeter setting not received, use Wise altimeter setting and increase all MDA 100 feet, increase LP and LNAV Cat C visibility $\frac{1}{4}$ mile and Circling Cat C visibility $\frac{1}{2}$ mile. Procedure NA at night. Circling NA for Cat C south of Rwy 7-25.


MISSED APPROACH: Climb to 3200 then climbing left turn to 5900 direct ZOMAD and hold, continue climb-in-hold to 5900.

AWOS-3 118.075	ATLANTA CENTER 127.85 269.3	GCO 135.075	UNICOM 123.05 (CTAF) 0
--------------------------	---------------------------------------	-----------------------	----------------------------------



ELEV	2653		TDZE	2653
------	------	--	------	------



CATEGORY	A	B	C	D
LP MDA	3080-1	427 (500-1)	3080-1¼ 427 (500-1¼)	NA
LNAV MDA	3080-1	427 (500-1)	3080-1¼ 427 (500-1¼)	NA
 CIRCLING	3240-1	587 (600-1)	3240-1½ 587 (600-1½)	NA

