

| | | |
|--|------------------------|---|
| WAAS CH 53524 W25A | APP CRS 252° | Rwy Idg 4299 TDZE 2653 Apt Elev 2653 |
|--|------------------------|---|

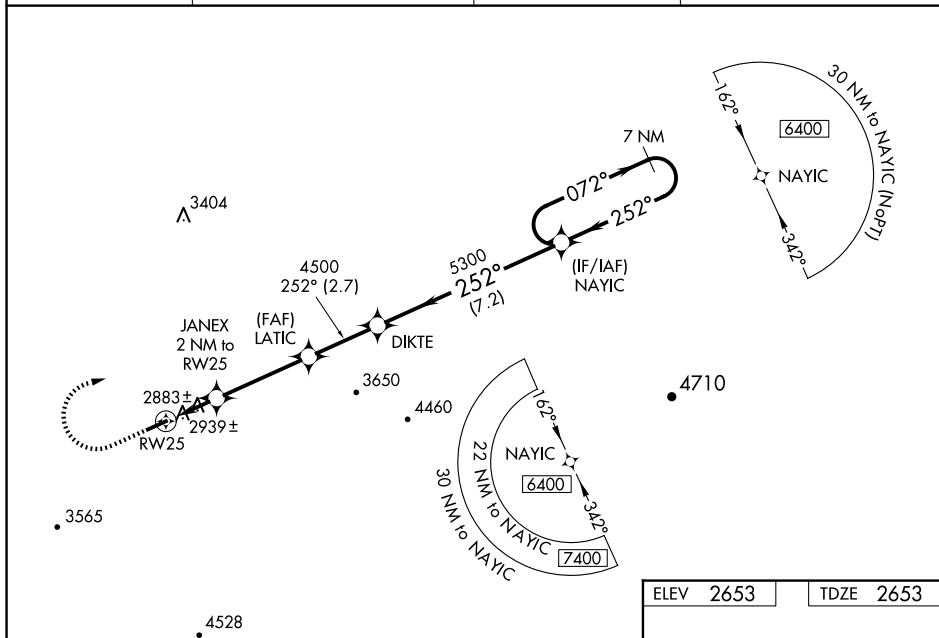
RNAV (GPS) RWY 25

TAZEWELL COUNTY (JFZ)

T Baro-VNAV NA when using Wise altimeter setting. For uncompensated Baro-VNAV systems, LNAV/VNAV NA below -20°C (-4°F) or above 54°C (130°F). DME/DME RNP-0.3 NA. Visibility reduction by helicopters NA. When local altimeter setting not received, use Wise altimeter setting and increase all DA 86 feet and all MDA 100 feet, increase LPV and LNAV/VNAV all Cats and Circling Cat C visibility ¾ mile, increase LNAV Cat C visibility ½ mile. When VGSI inop, Straight-in/Circling Rwy 25 procedure NA at night. When VGSI inop, Circling Rwy 7 NA at night. Circling NA for Cat C south of Rwy 7-25.

MISSED APPROACH:
Climb to 3800 then
climbing right turn to
6400 direct NAYIC
and hold, continue
climb-in-hold to 6400.

| | | | |
|--------------------------|---------------------------------------|-----------------------|----------------------------------|
| AWOS-3 118.075 | ATLANTA CENTER 127.85 269.3 | GCO 135.075 | UNICOM 123.05 (CTAF) 0 |
|--------------------------|---------------------------------------|-----------------------|----------------------------------|



3800 6400 NAYIC

VGS1 and RNAV glidepath not coincident
(VGS1 Angle 3.50/TCH 47).

7 NM Holding Pattern

*LNAV only.

RW25

JANEX
2 NM to RW25

LATIC
4500

DIKTE

NAYIC

072° → 6400

← 252°

252°


5300

3340*

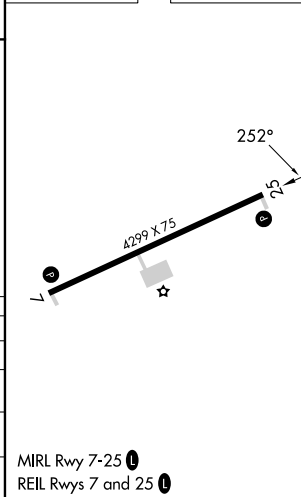
4500

GP 3.00°
TCH 54

2 NM 3.6 NM 2.7 NM 7.2 NM

| CATEGORY | A | B | C | D |
|--|----------------------|----------------------------|--|----|
| LPV DA | 3201-1 $\frac{7}{8}$ | 548 (600-1 $\frac{7}{8}$) | | NA |
| RNAV/ VNAV DA | 3210-1 $\frac{7}{8}$ | 557 (600-1 $\frac{7}{8}$) | | NA |
| RNAV MDA | 3200-1 | 547 (600-1) | 3200-1 $\frac{7}{8}$ 547 (600-1 $\frac{7}{8}$) | NA |
|  CIRCLING | 3240-1 | 587 (600-1) | 3240-1 $\frac{7}{8}$ 587 (600-1 $\frac{7}{8}$) | NA |

| | | |
|-----------|--|-----------|
| ELEV 2653 | | TDZE 2653 |
|-----------|--|-----------|



RNAV (GPS) RWY 25