

APP CRS
297°

Rwy ldg
2621

TDZE
6

Apt Elev
6

RNAV (GPS) Z RWY 30

SAN CARLOS (SQL)

RNP APCH - GPS.

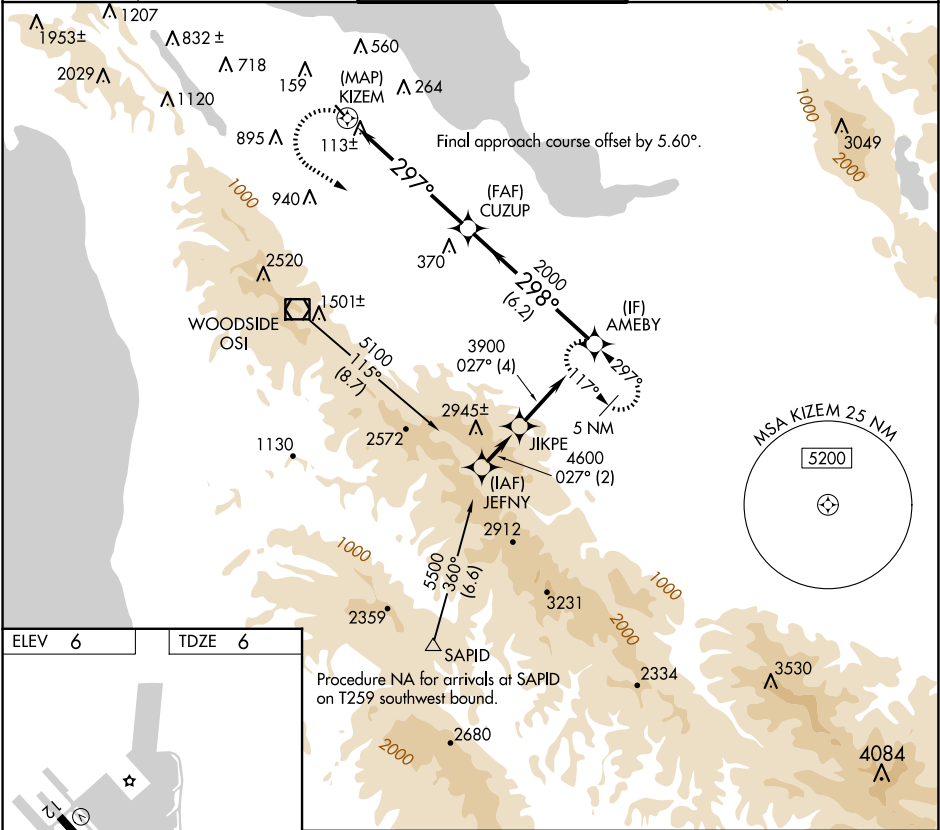
▼

▲

Rwy 30 helicopter visibility reduction below ¾ SM NA.

MISSED APPROACH: Climbing left turn to 5400 direct AMEBY and hold, continue climb-in-hold to 5400. Missed approach requires minimum climb of 340 feet per NM to 1300; if unable to meet climb gradient, see RNAV (GPS) Y RWY 30.

ATIS 125.9	NORCAL APP CON 133.95 317.6	SAN CARLOS TOWER ★ 119.0 (CTAF) 326.2	GND CON 121.6	UNICOM 122.95
---------------	--------------------------------	--	------------------	------------------



ELEV 6

TDZE 6

REIL Rws 12 and 30

MIRL Rwy 12-30

5400 AMEBY

3900 AMEBY

CUZUP

KIZEM

297°

298°

3.05° TCH 40

0.2

5.9 NM

6.2 NM

CATEGORY	A	B	C	D
LNAV MDA	900-1¼	894 (900-1¼)	NA	