

SAN CARLOS, CALIFORNIA

AL-9219 (FAA)

25107

APP CRS 297°	Rwy Idg 2621 TDZE 6 Apt Elev 6
------------------------	---

RNAV (GPS) Y RWY 30
SAN CARLOS (SQL)

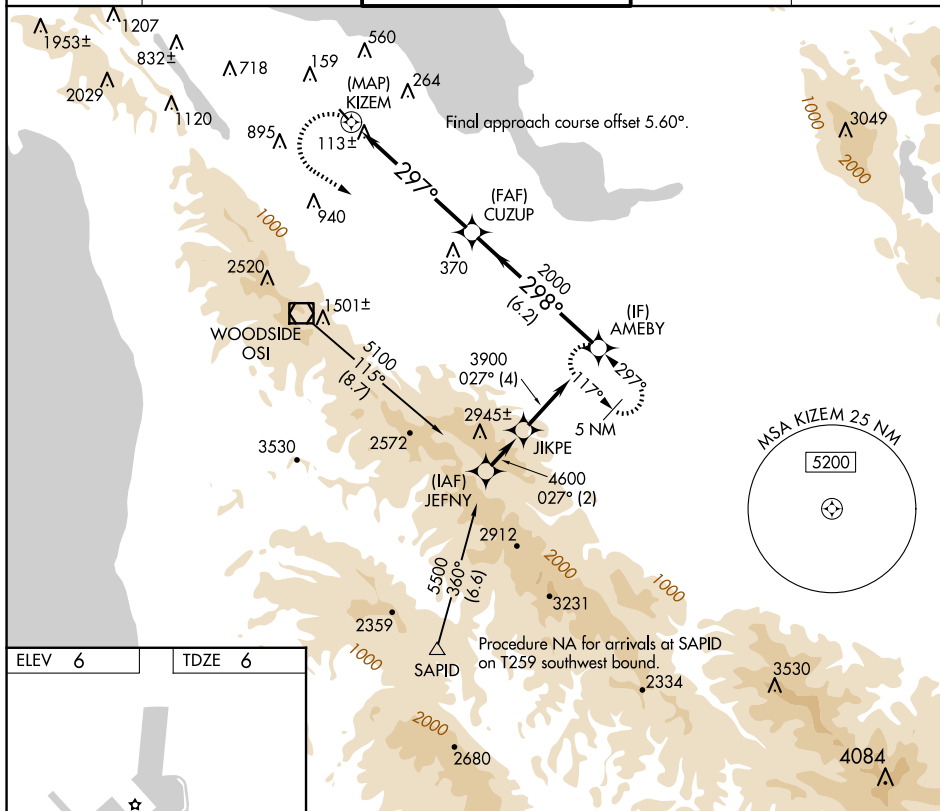
SAN CARLOS (SQL)

RNP APCH - GPS.

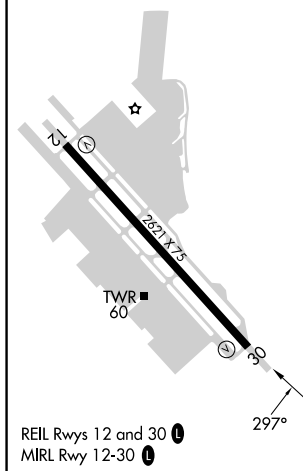
T When Circling to Rwy 12 at night, operational VGSI required, remain on or above VGSI glidepath until threshold. Rwy 30 helicopter visibility reduction below 1 SM NA. Circling NA west of Rwy 12-30.

MISSED APPROACH: Climbing left turn to 5400 direct AMEBY and hold, continue climb-in-hold to 5400.

ATIS 125.9	NORCAL APP CON 133.95 317.6	SAN CARLOS TOWER ★ 119.0 (CTAF) 0 326.2	GND CON 121.6	UNICOM 122.95
----------------------	---------------------------------------	---	-------------------------	-------------------------



ELEV 6		TDZE 6
--------	--	--------



CATEGORY	A	B	C	D
LNAV MDA	1260-1¼ 1254 (1300-1¼)	1260-1½ 1254 (1300-1½)		NA
CIRCLING	1260-1¼ 1254 (1300-1¼)	1260-1½ 1254 (1300-1½)		NA

SAN CARLOS, CALIFORNIA
Orig-C 11JUL24

37°31'N-122°15'W

SAN CARLOS (SQL)

RNAV (GPS) Y RWY 30

SW-2, 10 JUL 2025 to 07 AUG 2025