

PALO ALTO, CALIFORNIA

AL-9216 (FAA)

24137

APP CRS	Rwy Idg	2441
322°	TDZE	7
	Apt Elev	7

RNAV (GPS) RWY 31
PALO ALTO (PAO)

PALO ALTO (PAO)

RNP APCH.

T Circling NA southwest of Rwy 13-31. Rwy 31 helicopter visibility reduction below
A 1 SM NA. Procedure NA at night. When control tower closed, use Norman Y
Mineta San Jose Intl altimeter setting and increase all MDAs 40 feet.

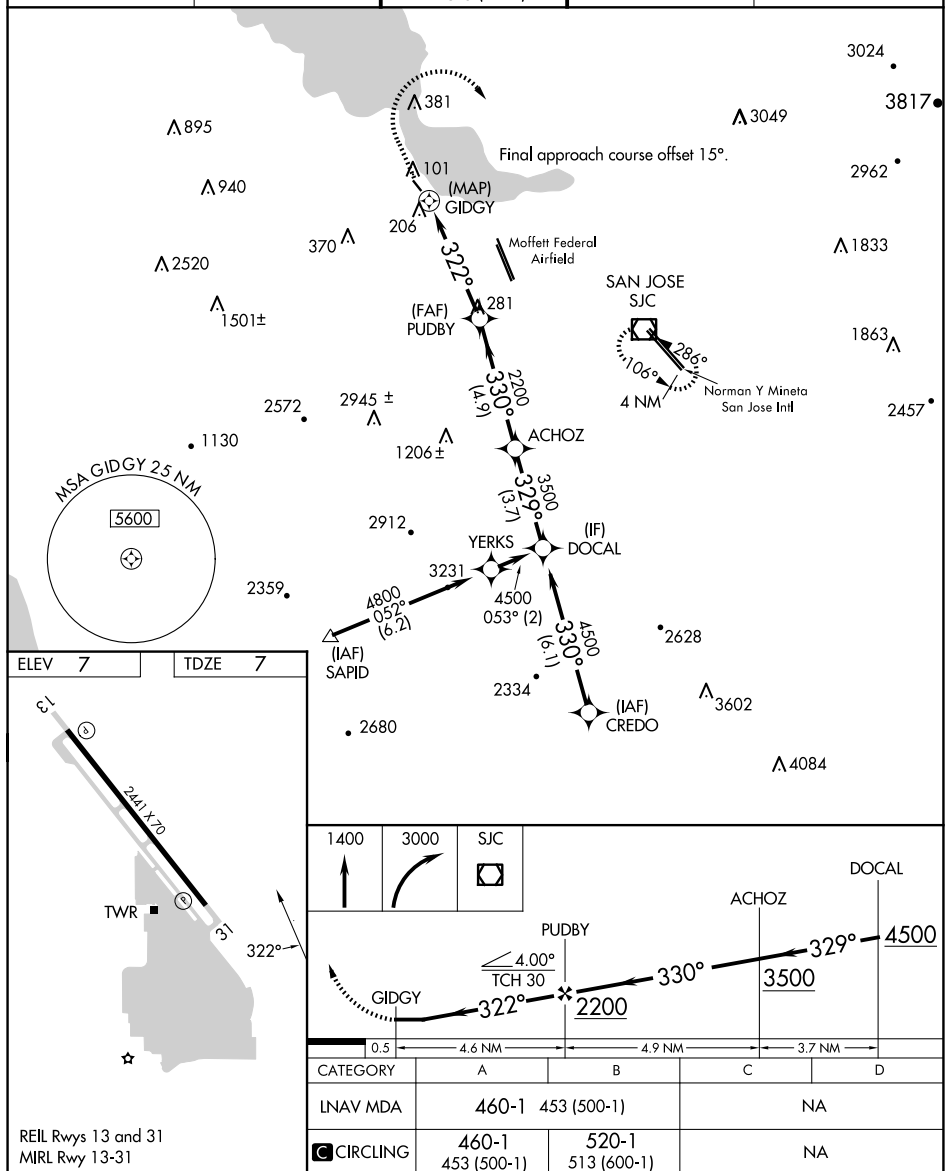
MISSED APPROACH: Climb to 1400 then climbing right turn to 3000 direct SJC VOR/DME and hold.

ATIS
35.275

NORCAL APP CON
121.3 270.35

LO ALTO TOWER★
118.6 (CTAF)

GND CON
125.0

UNICOM
122.95

PALO ALTO, CALIFORNIA

Amdt 2 10OCT19

37°28'N-122°07'W

PALO ALTO (PA0)

RNAV (GPS) RWY 31