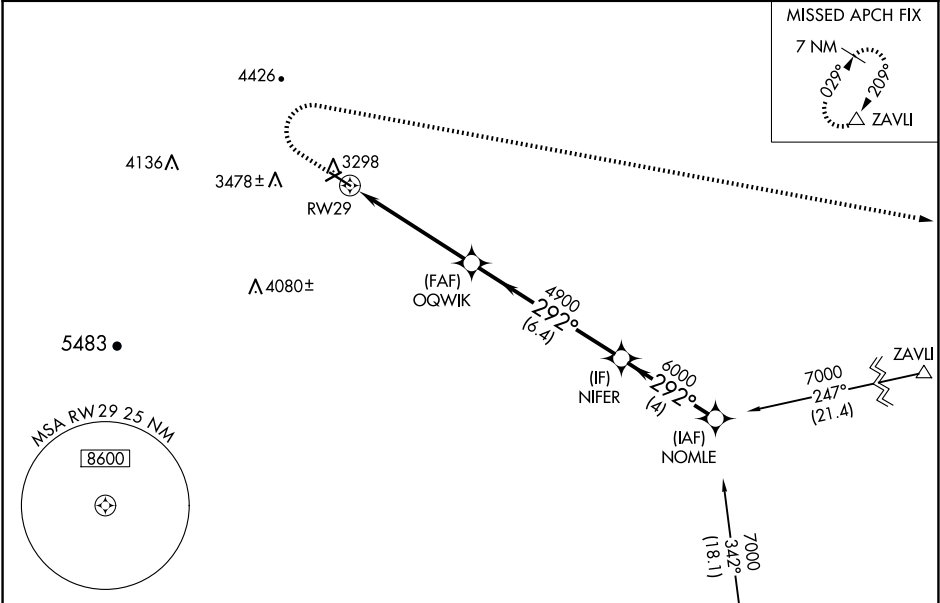


WAAS CH <b>90321</b> <b>W29A</b>	APP CRS <b>292°</b>	Rwy Idg TDZE <b>3231</b> Apt Elev <b>3255</b>
--	------------------------	---

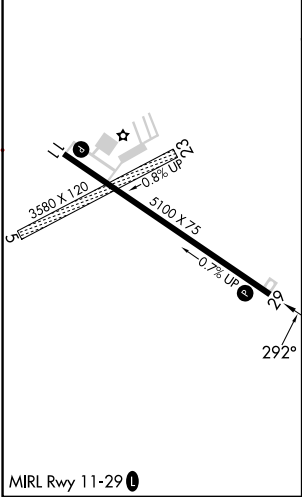
RNAV (GPS) RWY 29  
STURGIS MUNI (49B)

RNP APCH - GPS.	MISSED APPROACH: Climb to 3700 then climbing right turn to 7000 direct ZAVU and hold.
For uncompensated Baro-VNAV systems, LNAV/VNAV NA below -21°C or above 54°C *Missed approach requires minimum climb of 364 feet per NM to 4900.	

AWOS-3P <b>119.275</b>	ELLSWORTH APP CON ★ <b>119.5 259.1</b>	GCO <b>121.725</b>	UNICOM <b>122.8 (CTAF) 0</b>
---------------------------	---	-----------------------	---------------------------------



ELEV <b>3255</b>	TDZE <b>3231</b>
------------------	------------------



Procedure NA for arrivals at RAP VORTAC on airway radials 252 CW 072.			
3700	7000	ZAVU	VGSI and RNAV glidepath not coincident (VGSI Angle 3.00/TCH 29).
CATEGORY	A	B	C
LPV DA*	3532-1	301 (300-1)	NA
LPV DA	3532-1	301 (300-1)	NA
LNAV/VNAV DA	3532-1	301 (300-1)	NA
LNAV MDA	3640-1	409 (400-1)	NA