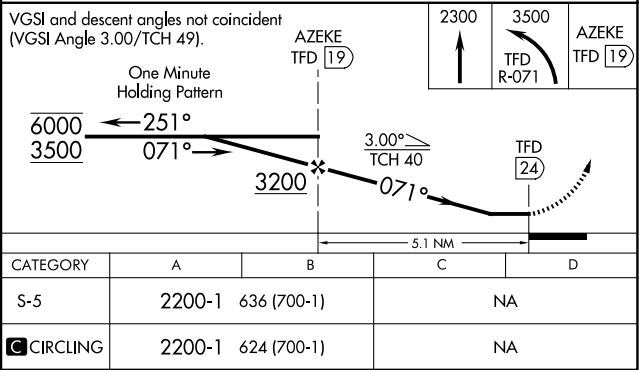
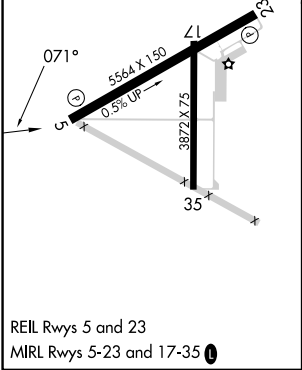
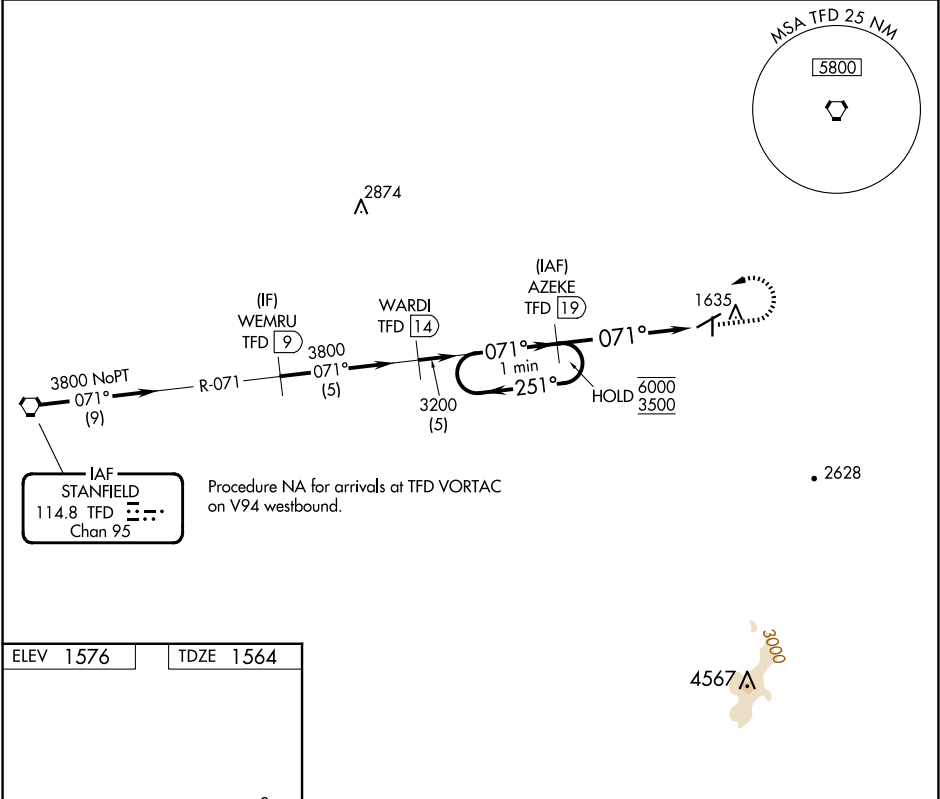


VORTAC TFD	APP CRS	Rwy Ldg	5564
114.8	071°	TDZE	1564
Chan 95		Apt Elev	1576

VOR RWY 5
COOLIDGE MUNI (P08)

DME required.	MISSED APPROACH: Climb to 2300 then climbing left turn to 3500 on TFD VORTAC R-071 to AZEKE/19 DME and hold.
<div>▼ ▲</div> <div>Circling Rwy 17-35 NA at night.</div>	

AWOS-3PT 119,350	ALBUQUERQUE CENTER 125.4 269.3	UNICOM 123.075 (CTAF) 0
---------------------	-----------------------------------	----------------------------



SW-4, 10 JUL 2025 to 07 AUG 2025

SW-4, 10 JUL 2025 to 07 AUG 2025