

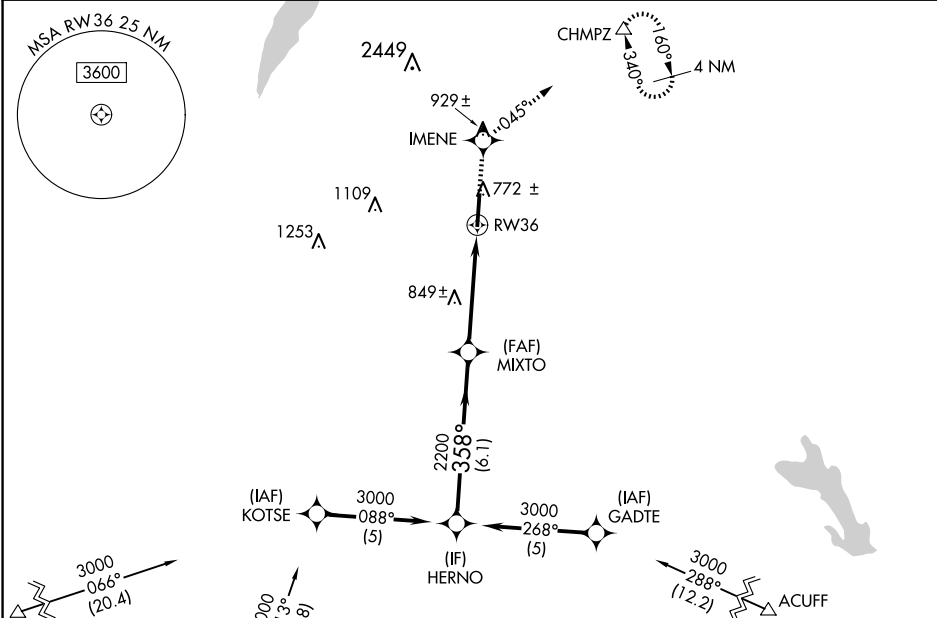
WAAS CH 62814 W36A	APP CRS 358°	Rwy Idg 6500 TDZE 703 Apt Elev 727
--	------------------------	---

RNAV (GPS) RWY 36
MID-WAY RGNL (JWY)

⚠ For uncompensated Baro-VNAV systems, LNAV/VNAV NA below -16°C (4°F) or above 47°C (117°F). DME/DME RNP-0.3 NA. When local altimeter setting not received, use Dallas Love Fld altimeter setting and increase all DA 88 feet and all MDA 100 feet, increase LPV all Cats visibility ¼ mile, LNAV/VNAV all Cats visibility ½ mile, LNAV Cats C and D visibility ¼ mile, Circling Cat D visibility ¼ mile. Baro-VNAV and VDP NA when using Dallas Love Fld altimeter setting.

MISSED APPROACH: Climb to 3000 direct IMENE and right turn via track 045° to CHMPZ and hold, continue climb-in-hold to 3000.

AWOS-3P 119.575	LONE STAR APP CON 125.2 343.65	UNICOM 122.975 (CTAF) 0
---------------------------	--	-----------------------------------



ELEV 727 TDZE 703

Procedure Turn NA
GP 3.00° TCH 40

VGSI and RNAV glidepath not coincident (VGSI Angle 3.00/TCH 40).

3000 IMENE CHMPZ
358° MIXTO
2200
*1.1 NM to RW36
*LNAV only.

6.1 NM 3.5 NM 1.1 NM

CATEGORY	A	B	C	D
LPV DA	953-1 250 (300-1)			
LNAV/VNAV DA	992-1 289 (300-1)			
LNAV MDA	1100-1 397 (400-1)			1100-1¼ 397 (400-1¼)
CIRCLING	1160-1 433 (500-1)	1180-1 453 (500-1)	1300-1½ 573 (600-1½)	1420-2¼ 693 (700-2¼)

81
1001 X 0055
0.6% Up
36
358°
MIRL Rwy 18-36 0
REIL Rwy 18 0

SC-2, 10 JUL 2025 to 07 AUG 2025

SC-2, 10 JUL 2025 to 07 AUG 2025