

WAAS CH 62920 W18A	APP CRS 178°	Rwy Idg 6500 TDZE 727 Apt Elev 727
--	------------------------	---

RNAV (GPS) RWY 18

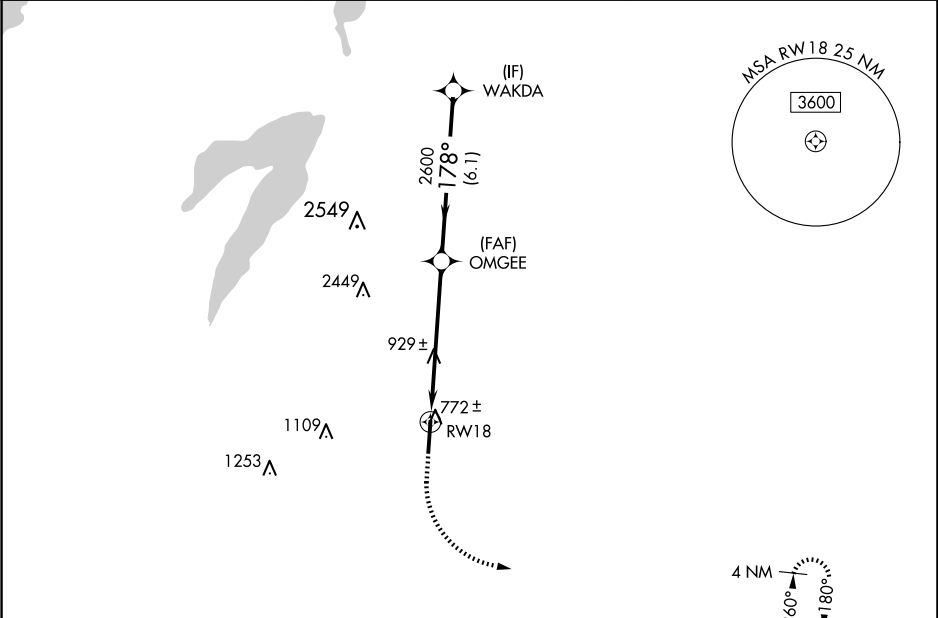
MID-WAY RGNL (JWY)

RNP APCH.

For uncompensated Baro-VNAV systems, LNAV/VNAV NA below -16°C or above 54°C.

MISSED APPROACH: Climb to 1300 then climbing left turn to 3000 direct CABBY and hold.

AWOS-3P 119.575	LONE STAR APP CON 125.2 343.65	UNICOM 122.975 (CTAF) 0
---------------------------	--	--



ELEV 727

TDZE 727

178°

81

6500 X 100

0.6 % UP

36

1300

3000

CABBY

*LNAV only.

RW18

OMGEE

WAKDA

2600

2600

3000

GP 3.00°

TCH 40

1.4 NM

4.3 NM

6.1 NM

CATEGORY	A	B	C	D
LPV DA	927-3⁄4 200 (200-3⁄4)			
LNAV/VNAV DA	998-7⁄8 271 (300-7⁄8)			
LNAV MDA	1220-1	493 (500-1)	1220-13⁄8	493 (500-13⁄8)
CIRCLING	1220-1	493 (500-1)	1300-11⁄2 573 (600-11⁄2)	1420-21⁄4 693 (700-21⁄4)

MIRL Rwy 18-36 **0**
REIL Rwy 18 **0**