

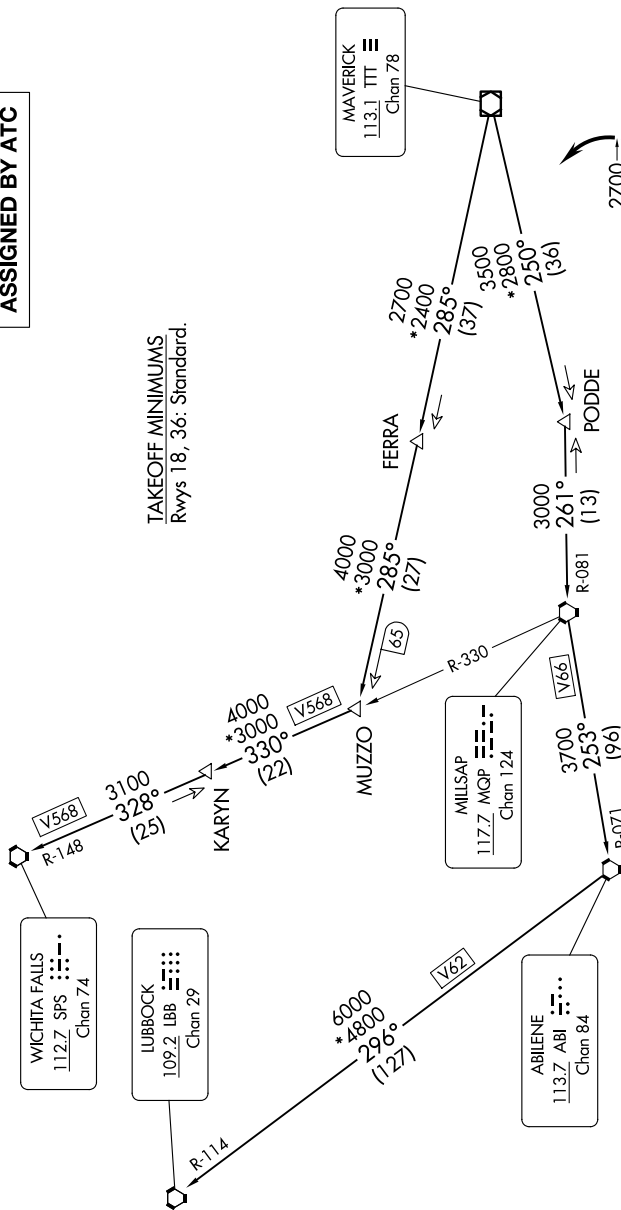
## KINGDOM FIVE DEPARTURE

MID-WAY RGNL (JWY)

**TOP ALTITUDE:  
ASSIGNED BY ATC**

LONE STAR DEP CON  
125.2 343.65  
CTAF  
122.975

TAKEOFF MINIMUMS  
Rwys 18, 36: Standard.



NOTE: LUBBOCK Transition: For all aircraft overflying the MQP VORTAC westbound or direct.  
NOTE: MILLSAP Transition: For all aircraft overflying the MQP VORTAC westbound or direct.  
NOTE: PODDE Transition: ATC assigned.  
NOTE: WICHITA FALLS Transition: For all aircraft landing within the Wichita Falls terminal area or overflying the SPS VORTAC.  
NOTE: For all aircraft requesting 17000 and below.

NOTE: Chart not to scale.

(CONTINUED ON FOLLOWING PAGE)

SC-2, 10 JUL 2025 to 07 AUG 2025