

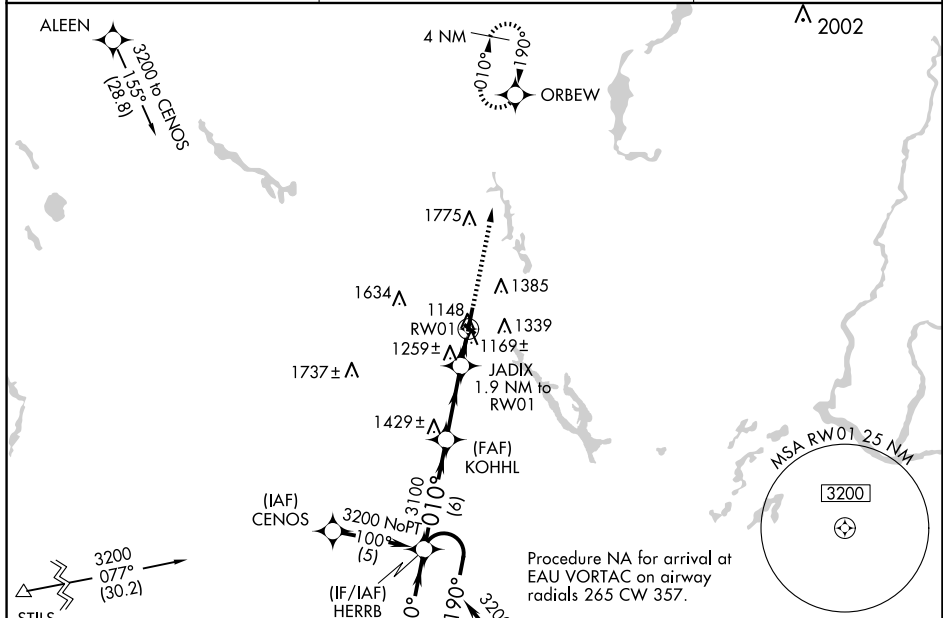
WAAS CH <b>86217</b> W01A	APP CRS <b>010°</b>	Rwy Idg <b>6500</b> TDZE <b>1101</b> Apt Elev <b>1109</b>
---------------------------------	------------------------	---

# RNAV (GPS) RWY 1

## RICE LAKE RGNL/CARL'S FLD (RPD)

	<p>If local altimeter setting not received, use Chippewa Valley Rgnl altimeter setting and increase all DAs/MDAs 120 feet. DME/DME RNP-0.3 NA. Baro-VNAV NA below -17°C (3°F). Baro VNAV and VDP NA when using Chippewa Valley Rgnl altimeter setting. For inoperative MALSR, increase LPV visibility to 1, and LNAV Cat D visibility to 1¼. Circling Rwy 13, 31 NA at night.</p>		<p><b>MISSED APPROACH:</b> Climb to 3200 direct ORBEW and hold.</p>
--	---	--	---

AWOS-3 <b>120.525</b>	MINNEAPOLIS CENTER <b>125.3 335.6</b>	UNICOM <b>122.7(CTAF)0</b>
--------------------------	--	-------------------------------



CATEGORY	A	B	C	D
LPV DA		1390-1/2	289 (300-1/2)	
RNAV/ VNAV		1440-3/4	339 (400-3/4)	
RNAV MDA	1520-1/2	419 (500-1/2)	1520-3/4 419 (500-3/4)	1520-1 419 (500-1)
CIRCLING	1600-1 1/4 493 (500-1 1/4)	1740-1 1/4 631 (700-1 1/4)	1740-1 3/4 631 (700-1 3/4)	1940-2 3/4 831 (900-2 3/4)