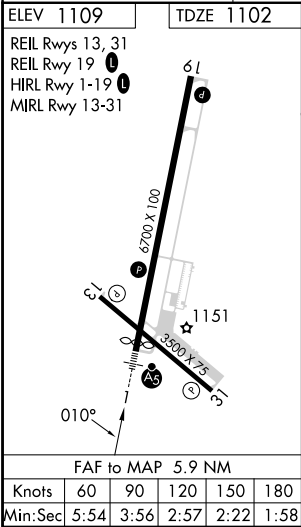
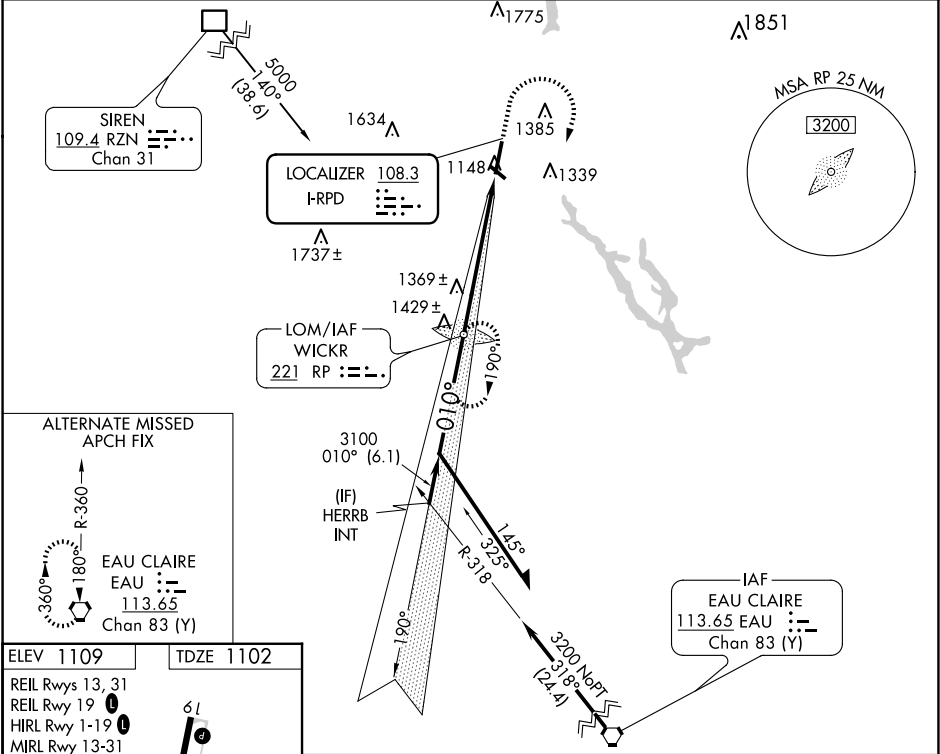


LOC I-RPD	APP CRS	Rwy Idg	6500
108.3	010°	TDZE	1102
		Apt Elev	1109

ILS or LOC RWY 1
RICE LAKE RGNL/CARL'S FLD (RPD)

ADF required. From RZN DME: RNAV 1-GPS required.	MALSR	MISSED APPROACH: Climb to 2200 then climbing right turn to 3200 direct WICKR LOM and hold.
Circling Rwy 13, 31 NA at night.		

AWOS-3 120.525	MINNEAPOLIS CENTER 125.3 335.6	UNICOM 122.7 (CTAF)
-------------------	-----------------------------------	------------------------



Remain within 10 NM	RP LOM	2200	3200	RP
3200	190°	3065	3100	VGSI and ILS glidepath not coincident (VGSI Angle 3.00°/TCH 28).
GS 3.00°	TCH 45	5.9 NM		
CATEGORY	A	B	C	D
S-ILS 1	1302-1/2 200 (200-1/2)			
S-LOC 1	1620-1/2	518 (600-1/2)	1620-1 518 (600-1)	1620-1 1/4 518 (600-1 1/4)
CIRCLING	1620-1 511 (600-1)	1740-1 631 (700-1)	1740-1 3/4 631 (700-1 3/4)	1940-2 3/4 831 (900-2 3/4)

EC-3, 10 JUL 2025 to 07 AUG 2025

EC-3, 10 JUL 2025 to 07 AUG 2025