

24305

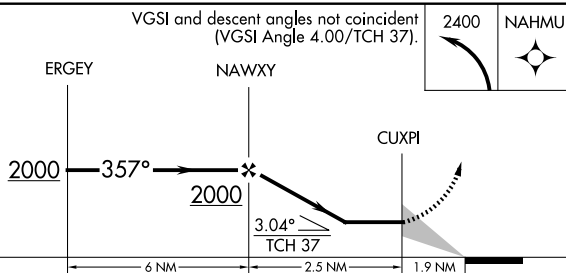
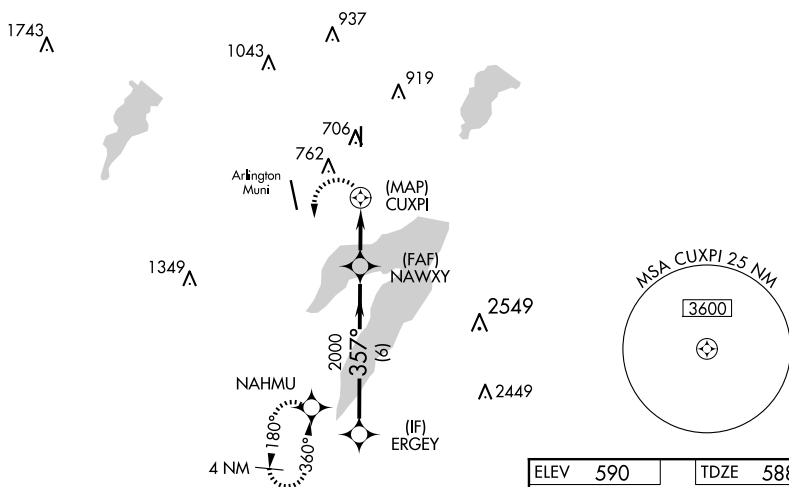
APP CRS	Rwy Idg	4001
357°	TDZE	588
	Apt Elev	590

RNAV (GPS) RWY 36
GRAND PRAIRIE MUNI (GPM)

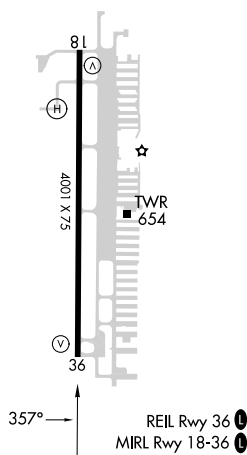
MISSED APPROACH: Climbing left turn to 2400 direct NAHMU and hold.

T	
A	Circling Rwy 18 NA at night.

AWOS-3P 118.475	LONE STAR APP CON 135.975 379.9	GRAND PRAIRIE TOWER ★ 128.55 (CTAF) 0	GND CON 121.15	UNICOM 123.075
---------------------------	---	---	--------------------------	--------------------------



CATEGORY	A	B	C	D
LNAV MDA	1020-2½	432 (500-2½)	NA	
CIRCLING	1100-2½ 510 (600-2½)	1280-2½ 690 (700-2½)	NA	



GRAND PRAIRIE MUNI (GPM)

RNAV (GPS) RWY 36

SC-2, 10 JUL 2025 to 07 AUG 2025