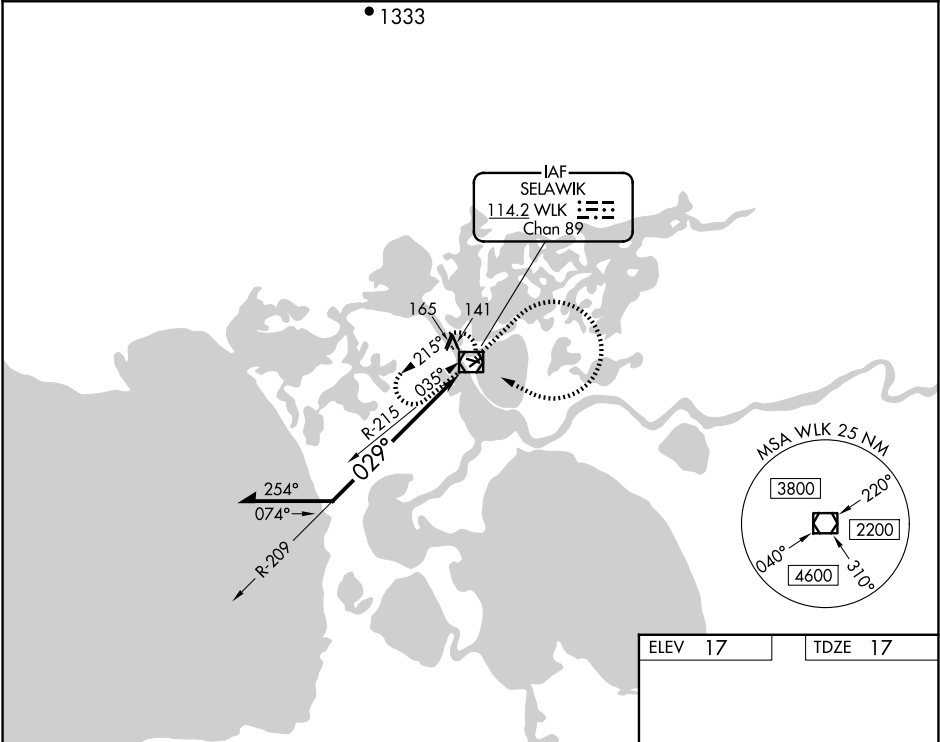


VOR/DME WLK	APP CRS	Rwy Ldg	3002
114.2	029°	TDZE	17
Chan 89		Apt Elev	17

VOR RWY 4
SELAWIK (WLK) (PASK)

▼ Rwy 4 helicopter visibility reduction below ¾ SM NA. Circling Rwy 9, 27 NA at night.		MISSED APPROACH: Climb to 1000 then climbing right turn to 2500 direct WLK VOR/DME and hold, continue climb-in-hold to 2500.	
AWOS-3P 135.65	ANCHORAGE CENTER 119.2 263.0	KOTZEBUE RADIO 122.5	CTAF 122.7 0



Remain within 10 NM		1000	2500	WLK
1600		↑	↷	☐
209°		WLK VOR/DME 2500		
029°				
CATEGORY	A	B	C	D
S-4	520-1	503 (600-1)	520-1½	503 (600-1½)
CIRCLING	520-1 503 (600-1)	580-1 563 (600-1)	580-1½ 563 (600-1½)	580-2 563 (600-2)

MIRL Rwy 9-27 and 4-22 0